

One of The **Americas'**
Fastest Growing
Companies 2022

-By Financial Times



ikiO
LED LIGHTING

LIGHTING CATALOG



Commercial Lighting
Industrial Lighting
Hazardous Location Lighting
Educational Lighting
Sports Lighting
Retail Lighting

www.ikioledlighting.com

LIGHTING CATALOG

About IKIO	4-5
Driving Change In The Lighting Industry Through	6-7
How Are We Better?	8-9
Our Manufacturing Excellence	10-11
Our Product Segments	12-15
Tubes	16-26
Refrigeration Lights	27-28
Linear Low Bays	29-33
Tri-Proof Luminaires	34-35
Troffers	36-44
Panel Lights	45-54
Downlights	55-58
Retrofit Lamps	59-63
High Bays	64-72
Flood Lights	73-78
Canopy Lights	79-82
High Mast Lights	83-84
Area Luminaires	85-87
Street Lights	88-89
Wall Packs	90-93
Hazardous Location Lights	94-109
Sensors	110-114

CONTENTS



ABOUT IKIO

IKIO is a leading LED lighting manufacturer in the US, persistently delivering some of the most unique & innovative LED solutions to the lighting world. Our continuous effort to update ourselves with the latest technology and align our processes to the changing market demand has made IKIO what we are today. Additionally, the fully integrated manufacturing set-up allows us to consistently create next-generation LED lighting products, giving us a leg-up over our competitors.

Driving Change In The

Lighting Industry Through



Innovation



Collaboration



Honesty

1

Consistently advancing our tools and technology to ensure that you get the best of what the industry has to offer.

2

Building healthy business relationships with ESCOs, Distributors, and other clients to help people become more energy efficient.

3

Fostering a company culture that encourages responsibility, transparency & growth to stay true to our goal of delivering excellence.





How Are We Better?



Ready To Ship Products

Swift nationwide deliveries through two conveniently located US-based inventories.



Prototyping Capability

Product prototypes for an initial evaluation to hit the desired metrics for effective lighting results.



Precise Photometry Services

Reports that help determine light output and fixture requirements to meet the desired foot candles. Reports are delivered within a 24-hour turnaround period.



Net Terms Up To 90 Days!

Buy lighting products from IKIO now and pay later within 90 days. No hidden charges.



Top-Notch Customer Service

A dedicated service portal to address your project related concerns and serve you better.



Customer Kickback Programs

We announce several customer kickback schemes to reward our clients for their loyalty towards IKIO.



Rebate Eligible Offerings

Qualified & Certified products that are eligible for state wide rebate programs.





Our Manufacturing Excellence



**Over 10 million fixtures
are produced annually.**



**Continuous research
& development.**



**World-class vertically
integrated setup.**



**Lower in-process
rejection rate (<0.68%).**



**Major quality certifications
(ISO 9001, 14000 & 18001 & OHSAS).**



Our Product Segments





Commercial Lights

For our commercial clients, energy efficiency and longevity are core concerns when it comes to lighting solutions. To meet their unique project needs, we carry a vast range of rebate-eligible products perfect for areas such as offices, hotels, hospitals, shopping complexes, and restaurants.

Our super-efficient luminaires offer:

- **Flexibility in Application**
Multiple CCT & Power options
- **Improved Visibility**
Flicker-free & uniform light output with high CRI
- **Refined Aesthetics**
Pre-fabrication paint & modern finish

Our Offerings

Tubes | Panels | Troffers | Refrigeration Lights
Linear Low Bays | Downlights | Tri Proof Lights

Industrial Lights

Industrial lights are important to smoothly carry out operations in large warehouses and manufacturing units. However, our category of industrial lights also covers other aspects of the industries, such as the building facades, parking lots, and surrounding streets to ensure security.

Here are some unique features of our industrial lights:

- **Enhanced Performance**
Excellent efficacy of up to Up to 140 lm/W for most products along with even and wide distribution of light.
- **Long-Lasting**
Rugged construction with superior heat dissipation system that allows the fixture to last longer.
- **Wet Location Rated**
Most of our industrial products are IP65 rated, which implies that wet locations do not affect their performance.

Our Offerings

Retrofit Lamps | Flood Lights | High Bays | Canopy Lights
Area Luminaires | Wall Packs | High Mast Lights





Hazardous Location Lights

Working at extreme locations such as chemical plants, oil & gas industry, metal treatment plants, and mining industries gets scarier if the lights used do not meet the standards set for hazardous locations. At IKIO, we only offer products that have all the necessary certifications for such extreme environments.

Here's more about our products:

We have products for all divisions and classes of hazardous locations.

Class I, Division 2, Groups A, B, C, D
 Class II, Division 1 & 2, Group E, F, G
 Class I, Division 1, Group C, D
 Class III

- **Delivers in Extreme Environments**
IP66 and IK10 rated for impact & shock resistance
- **Improved Visibility**
140 lm/W efficacy with multiple mounting options
- **Certified & Tested for Performance**
Industry certifications: NFPA, NEC, IK, NEMA, ATEX

Our Offerings

High Bays | Low Bays | Linear Low Bays | Linear Lights
 Linear Area Lights | Area Lights | Drop Lights | Exit Lights

Educational Lights

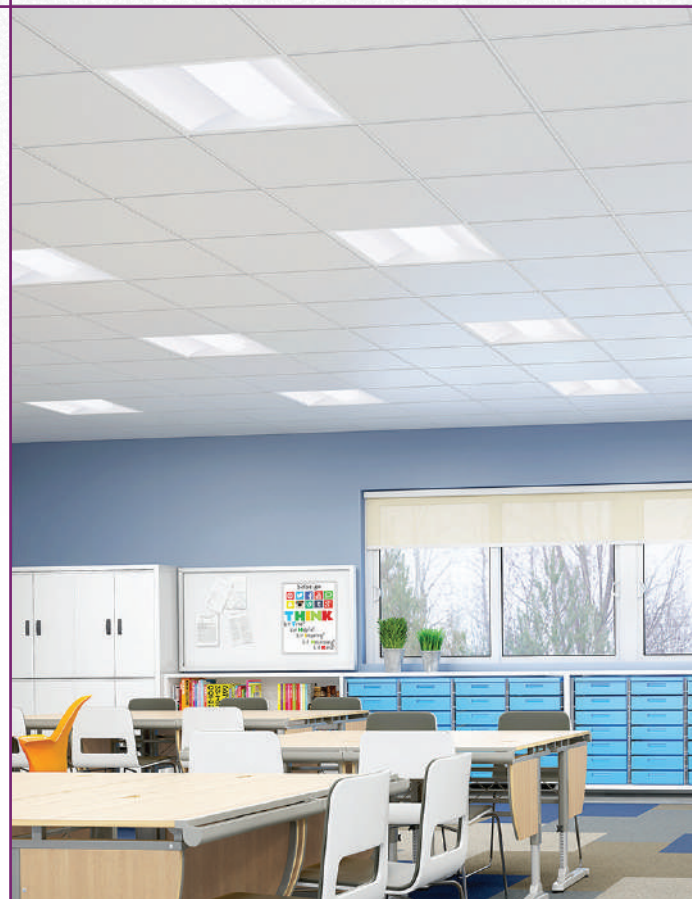
Lights play a vital role in creating an efficient learning environment. We offer a range of educational lights that not just deliver in terms of performance but also help students focus better through CCT & Power selectable capabilities. CCT & Power selectable luminaires if used effectively can be aligned to our circadian rhythms which results in improved concentration.

Here's why our educational lights stand out:

- **Superb Illumination**
Glare-free, flicker-free, and uniform light output ensures improved visibility without any strain on eyes
- **Comfortable**
Multiple CCT options allow you to choose the right type of light for increased concentration & performance
- **Energy-efficient & Cost-effective**
Durable, long-lasting lights with optimal performance, resulting in big energy savings & reduced maintenance costs.

Our Offerings

Panels | Troffers | Tubes | Downlights





Sports Lights

A stadium without effective lighting can not only hinder the game but is also a major killjoy for those sitting in the audience. Lights delivering high lumen output have wide beam angles, and can surpass the rough environmental conditions that qualify perfectly to illuminate huge stadiums and large sports arenas.

Here are some features of our sports lights:

- **Weatherproof**
IP66 rated with up to 130 mph Wind Shear Rating & a low EPA of 1.59 ft²
- **Perfect, Glare-free Illumination**
240° adjustable beam angle with multi-faceted optics
- **Energy Efficient**
Qualified & certified products with 100,000 service operating hours

Our Offerings

Flood Lights | High Bays

Retail Lights

Studies have proven that poor lighting in a store can truly affect your sales. Well, don't take that chance! IKIO offers an expansive range of retail lights that are a unique blend of smart design and superior functionality.

Here are some important features that make our retail lights a must-have in your stores:

- **High CRI (90+)**
Effective color rendition ensures better visibility of products & an enhanced shopping experience
- **Excellent Lumen Output (90 - 130 lm/W)**
Superior efficacy means you will get uniform & bright lighting using lesser number of fixtures
- **Wide Illumination Area (11° - 120°)**
High-quality lenses and different beam spreads result in wide coverage area without any dark spots

Our Offerings

Downlights | Track Lights | Pendant Lights | Retrofits



| Tubes

T5 Tubes Type B

T8 Tubes Type B

T8 Tubes Type A&B



T5 Tube

Type B

Electrical

Power	15 W 18 W 24 W
Voltage	100-277 V
Power Factor	≥0.90

*24 W only available in 150 lm/W

Lighting Performance

Lumens	2400 lm 2988 lm 3840 lm
Efficacy	160 lm/W
Color Temperature (CCT)	2700 K 4000 K 5000 K
Color Rendering (CRI)	80+
Beam Angle	360°
Light Distribution	Type I, Very Short
Dimmable Lighting Control	Non Dimmable

Environment

Operating Temperature	-13 °F ~ +113 °F
Suitable Location	DAMP
Ingress Protection Rating (IP)	IP20

Lifespan

Average Life (Hours)	50,000
Warranty (Years)	5

Dimensions (Inches)

Length	48"
Height (Between End Cap Pins)	0.19"
Diameter	Ø0.90"

Components

Driver	IK10 Internal Driver
--------	----------------------

Construction

Housing	Aluminum
Lens	Clear (Polycarbonate)
Base / Power Supply	Hard Wired
Finish	White

Application Areas

Schools, Offices, Hospitals, Hotels, Manufacturing Industrial Facilities, Residential Areas

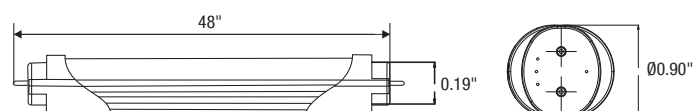
Qualifications and Certifications

Qualified Part Number	IK-T504
-----------------------	----------------



DesignLights Consortium® (DLC) Premium qualified product. Not all versions of this product may be DLC qualified. Please check the DLC Qualified Products List at www.designlights.org/QPL to confirm which versions are qualified.

*Specifications, Warranty, and Qualifications can vary per item/SKU. See technical data sheets (TDS) for specific information.





T8 Tube

Type B

Electrical

Power	40 W
Voltage	100-277 V
Power Factor	≥0.90

Lighting Performance

Lumens	5840 lm
Efficacy	146 lm/W
Color Temperature (CCT)	4000 K 5000 K
Color Rendering (CRI)	84
Beam Angle	120°
Dimmable Lighting Control	Non Dimmable

Environment

Operating Temperature	-13 °F ~ +113 °F
Suitable Location	DAMP
Ingress Protection Rating (IP)	IP20

Lifespan

Average Life (Hours)	50,000
Warranty (Years)	5

Dimensions (Inches)

Length	96"
Height (Between End Cap Pins)	0.50"
Diameter	Ø1.15"

Components

LED Light Source	Everlight
Driver	IKIO Internal Driver

Construction

Housing	Aluminum
Diffuser	Clear (Polycarbonate)
Base / Power Supply	FA08 / G13 / R14D / Hard Wired
Finish	Milky

Application Areas

Schools, Offices, Hospitals, Hotels, Manufacturing Industrial Facilities, Residential Areas

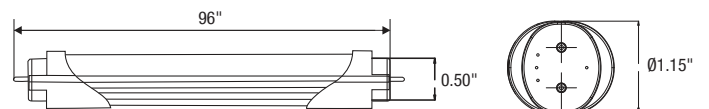
Qualifications and Certifications

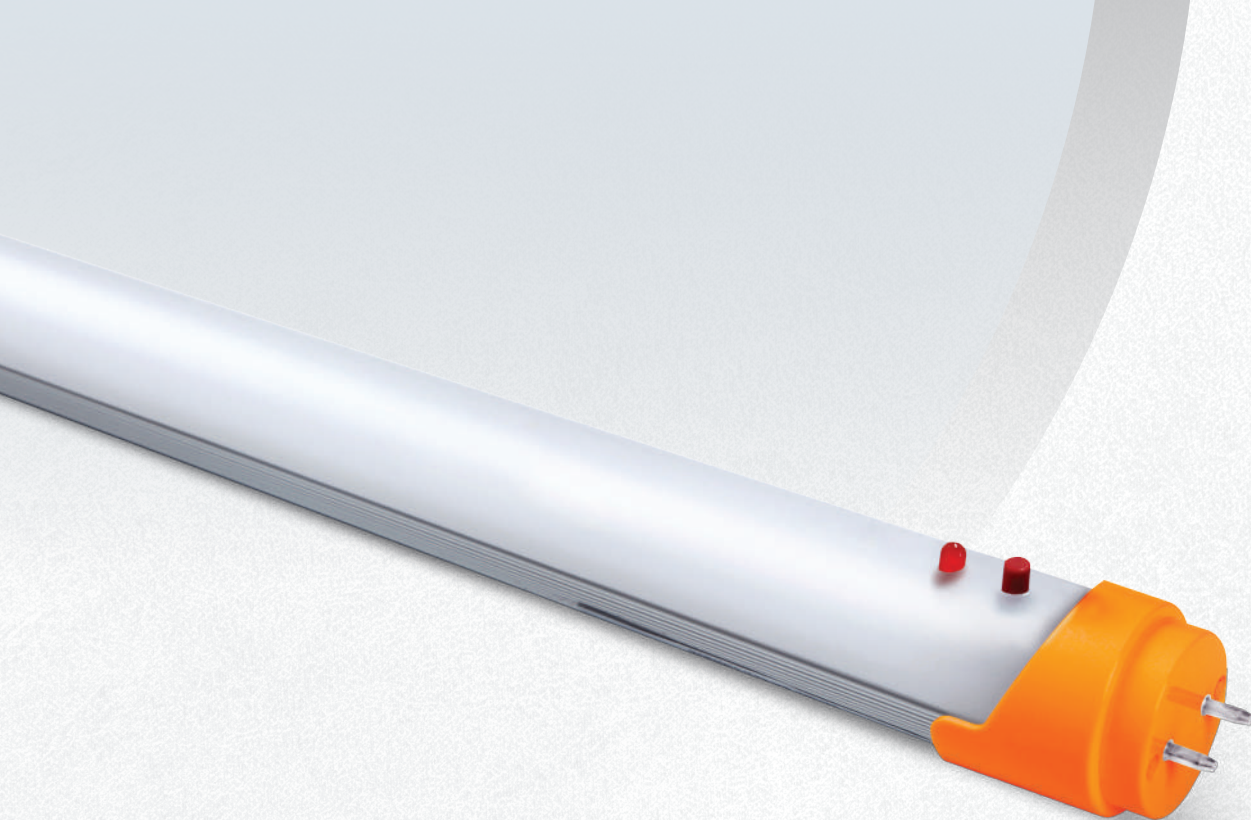
Qualified Part Number	IK-T808
-----------------------	----------------



DesignLights Consortium® (DLC) Premium qualified product. Not all versions of this product may be DLC qualified. Please check the DLC Qualified Products List at www.designlights.org/QPL to confirm which versions are qualified.

*Specifications, Warranty, and Qualifications can vary per item/SKU. See technical data sheets (TDS) for specific information.





T8 Emergency Tube

Type B

Electrical

Power	15 W
Voltage	120-277 V
Power Factor	>0.9

Lighting Performance

Lumens	2250 lm
Efficacy	150 lm/W
Color Temperature (CCT)	3500 K 4000 K 5000 K
Color Rendering (CRI)	80+
Beam Angle	120°
Dimmable Lighting Control	Non Dimmable

Environment

Operating Temperature	-4 °F ~ +104 °F
Suitable Location	DAMP
Ingress Protection Rating (IP)	IP20

Dimensions (Inches)

Length	48"
Height (Between End Cap Pins)	0.50"
Diameter	Ø1.15"

Lifespan

Average Life (Hours)	75,000
Warranty (Years)	10

Components

LED Light Source	Lumileds
Driver	IKIO Internal Driver

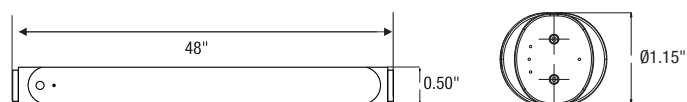
Construction

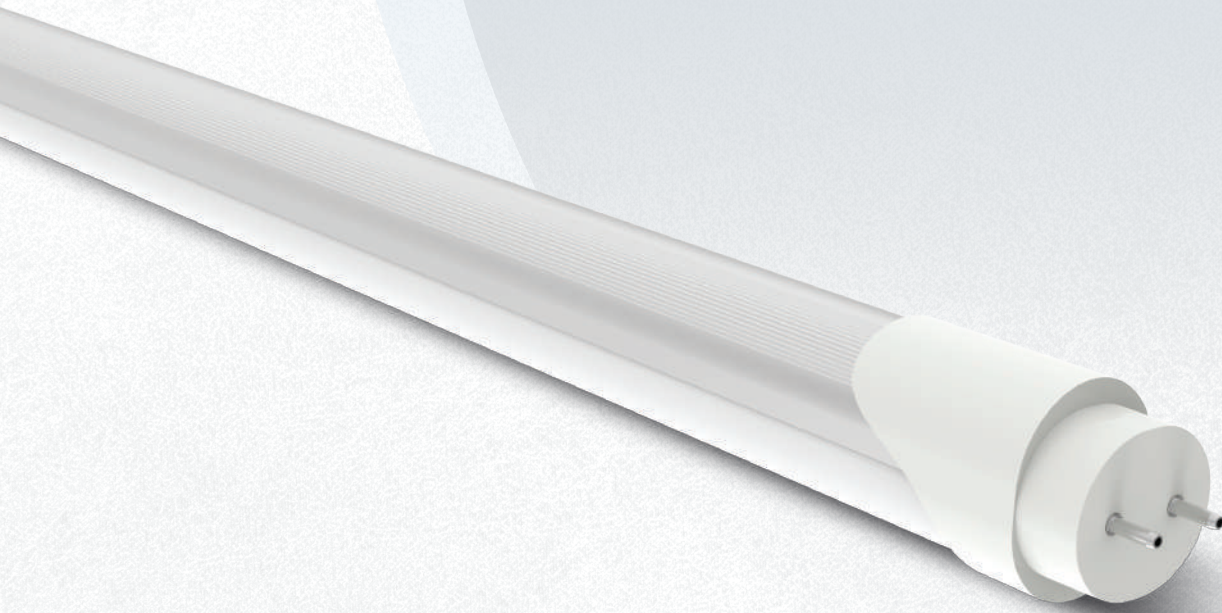
Housing	Aluminum
Diffuser	Clear
Base / Power Supply	FA08 / G13 / R14D / Hard Wired
Finish	Milky

Application Areas

Offices, Schools, Retail Stores, General Areas, Residential Spaces, Lobbies

*Specifications, Warranty, and Qualifications can vary per item/SKU. See technical data sheets (TDS) for specific information.





T8 Triac Dimming Tube

Type B

Electrical

Power	8 W 12 W 15 W 18 W
Voltage	100-277 V
Power Factor	>0.9

Lighting Performance

Lumens	1200 lm 1800 lm 2250 lm 2700 lm
Efficacy	150 lm/W
Color Temperature (CCT)	3000 K 4000 K 5000 K
Color Rendering (CRI)	80+
Beam Angle	140°

Environment

Operating Temperature	-4 °F ~ +49 °F
Suitable Location	DAMP
Ingress Protection Rating (IP)	IP20

Lifespan

Average Life (Hours)	50,000
Warranty (Years)	5

Components

LED Light Source	Lumileds
Driver	IKIO Internal Driver

Construction

Housing	Aluminum
Diffuser	Frosted
Base / Power Supply	G13
Finish	White

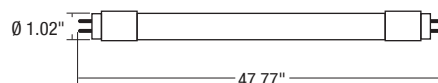
Application Areas

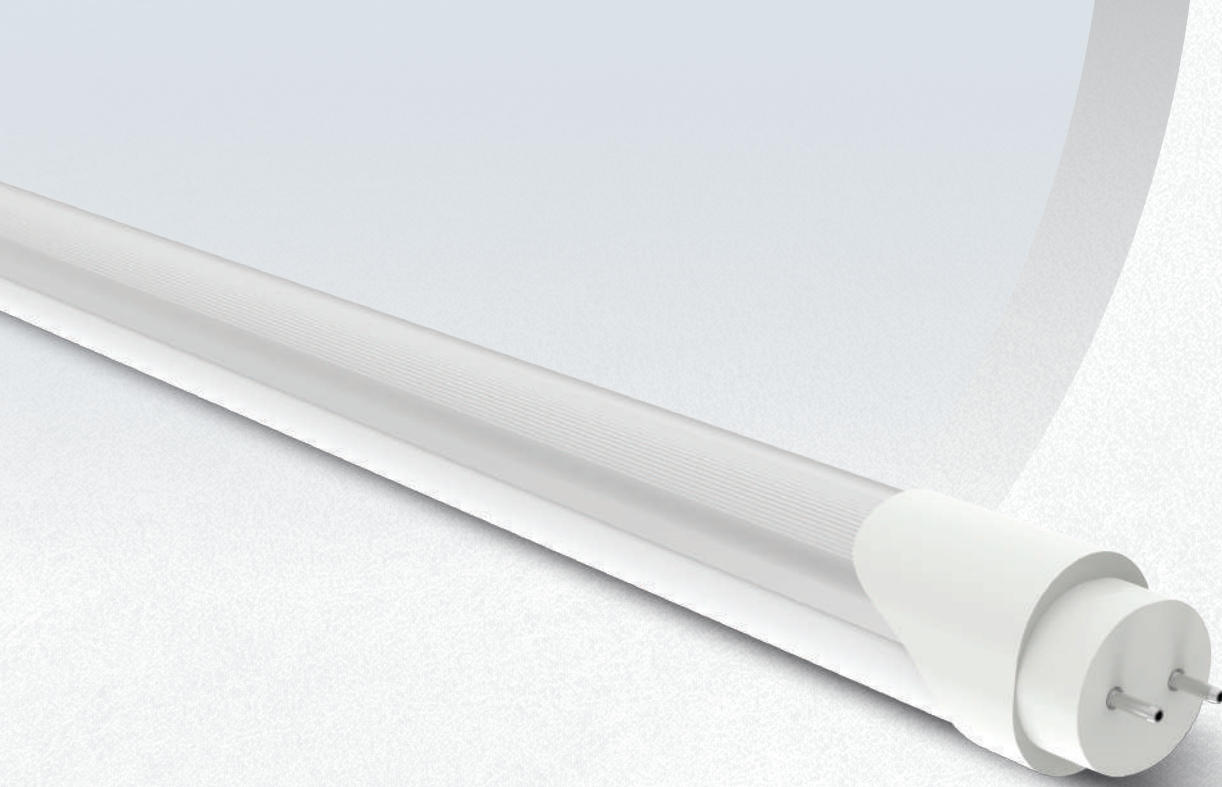
Offices, Schools, Retail Stores, General Areas, Residential Spaces, Lobbies

*Specifications, Warranty, and Qualifications can vary per item/SKU. See technical data sheets (TDS) for specific information.

Dimensions (Inches)

Length	48"
Diameter	Ø 1.02"





T8 Flicker Free Tube

Type B

Electrical

Power	8 W 12 W 15 W 18 W
Voltage	100-277 V
Power Factor	>0.9

Lighting Performance

Lumens	1200 lm 1800 lm 2250 lm 2700 lm
Efficacy	150 lm/W
Color Temperature (CCT)	3000 K 4000 K 5000 K
Color Rendering (CRI)	80+
Beam Angle	140°

Environment

Operating Temperature	-4 °F ~ +49 °F
Suitable Location	DAMP
Ingress Protection Rating (IP)	IP20

Dimensions (Inches)

Length	48"
Diameter	Ø 1.02"

Lifespan

Average Life (Hours)	50,000
Warranty (Years)	5

Components

LED Light Source	Lumileds
Driver	IKIO Internal Driver

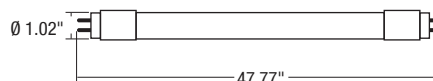
Construction

Housing	Aluminum
Diffuser	Frosted
Base / Power Supply	G13
Finish	White

Application Areas

Offices, Schools, Retail Stores, General Areas, Residential Spaces, Lobbies

*Specifications, Warranty, and Qualifications can vary per item/SKU. See technical data sheets (TDS) for specific information.





T8 Tube

Type A&B

Efficacy
160 lm/W

Electrical

Power	12 W 15 W 18 W 20 W
Voltage	100-277 V
Power Factor	0.9

Lighting Performance

Lumens	1800 lm 2250 lm 2700 lm 3000 lm
Efficacy	160 lm/W
Color Temperature (CCT)	3000 K 3500 K 4000 K 5000 K
Color Rendering (CRI)	80+
Beam Angle	180°
Dimmable Lighting Control	Non Dimmable

Environment

Operating Temperature	-13 °F ~ +113 °F
Suitable Location	DAMP
Ingress Protection Rating (IP)	IP20

Lifespan

Average Life (Hours)	50,000
Warranty (Years)	5 (10 Years Warranty Option Available)

Dimensions (Inches)

Length	48"
Height (Between End Cap Pins)	0.50"
Diameter	Ø1.02"

Components

LED Light Source	Sanan
Driver	Non isolated IKIO Internal Driver

Construction

Housing	Aluminum and Polycarbonate
Diffuser	Frosted Clear
Base / Power Supply	G13 / Direct Wire or Ballast use
Finish	White

Application Areas

Offices, Schools, Retail Stores, Residential Spaces, Lobbies

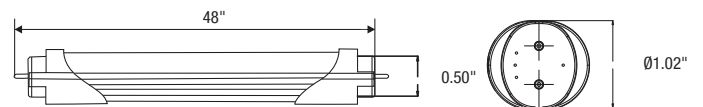
Qualifications and Certifications

Qualified Part Number	K-T804-0012
-----------------------	--------------------



DesignLights Consortium® (DLC) Premium qualified product. Not all versions of this product may be DLC qualified. Please check the DLC Qualified Products List at www.designlights.org/QPL to confirm which versions are qualified.

*Specifications, Warranty, and Qualifications can vary per item/SKU. See technical data sheets (TDS) for specific information.





Efficacy
175 lm/W

T8 Tube

Type A&B

Electrical

Power	12 W
Voltage	100-277 V
Power Factor	≥0.90

Lighting Performance

Lumens	2100 lm
Efficacy	175 lm/W
Color Temperature (CCT)	3000 K 3500 K 4000 K 5000 K
Color Rendering (CRI)	80+
Beam Angle	180°
Dimmable Lighting Control	Non Dimmable

Environment

Operating Temperature	-13 °F ~ +113 °F
Suitable Location	DAMP
Ingress Protection (IP)	IP20

Dimensions (Inches)

Length	48"
Height (Between End Cap Pins)	0.50"
Diameter	Ø1.02"

Lifespan

Average Life (Hours)	50,000
Warranty (Years)	5 (10 Years Warranty Option Available)

Components

LED Light Source	Sanan
Driver	Non solated IKIO Internal Driver

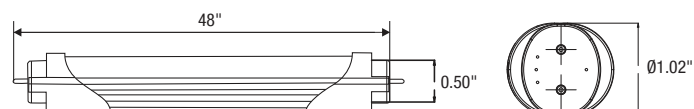
Construction

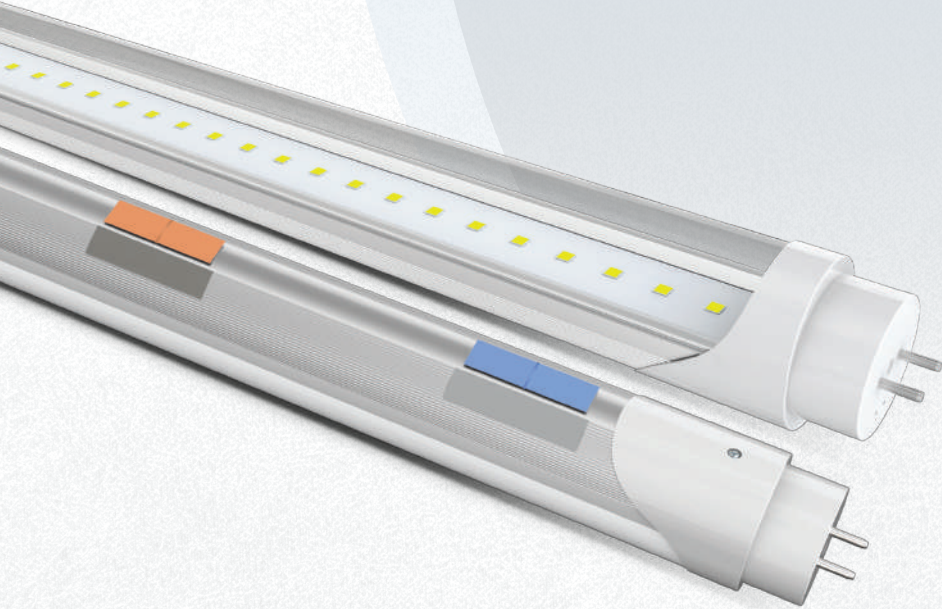
Housing	Aluminum and Polycarbonate
Diffuser	Frosted Clear
Base / Power Supply	G13 / Direct Wire or Ballast use
Finish	White

Application Areas

Offices, Schools, Retail Stores, Residential Spaces, Lobbies

*Specifications, Warranty, and Qualifications can vary per item/SKU. See technical data sheets (TDS) for specific information.





Delphi T8 Tube

Type A&B | CCT & Power Selectable



Electrical

Power	10 W-12 W-15 W
Voltage	100-277 V (Also available in 100-347 V)
Power Factor	0.963

Lighting Performance

Lumens	1700 lm-1800 lm-1950 lm
Efficacy	170 lm/W-150 lm/W-130 lm/W
Color Temperature (CCT)	3500 K-4000 K-5000 K
Color Rendering (CRI)	82.8
Beam Angle	120°
Dimmable Lighting Control	Non Dimmable

Environment

Operating Temperature	-04 °F ~ +104 °F
Suitable Location	DAMP
Ingress Protection Rating (IP)	IP22

Dimensions (Inches)

Length	48"
Height (Between End Cap Pins)	0.50"
Diameter	Ø1.02"

Lifespan

Average Life (Hours)	50,000
Warranty (Years)	5

Components

LED Light Source	Sanan
Driver	Dual Mode IKIO Internal Driver

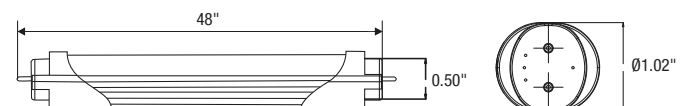
Construction

Housing	Aluminum
Cover Material / Lens	Polycarbonate
Diffuser	Clear-Frosted
Base / Power Supply	G13/ Direct Wire or Ballast use

Application Areas

Offices, Hospitals, Schools, Corridors, Underground Stations, Stairways

*Specifications, Warranty, and Qualifications can vary per item/SKU. See technical data sheets (TDS) for specific information.





T8 Motion Sensor Tube

Type A&B

Electrical

Power	10 W 12 W 18 W
Voltage	100-277 V
Power Factor	>0.95

Lighting Performance

Lumens	1750 lm 1860 lm 2430 lm
Efficacy	175 lm/W 155 lm/W 135 lm/W
Color Temperature (CCT)	4000 K 5000 K
Color Rendering (CRI)	>80
Beam Angle	120°

Environment

Operating Temperature	-4 °F ~ +104 °F
Suitable Location	DRY
Ingress Protection Rating (IP)	IP20

Lifespan

Average Life (Hours)	50,000
Warranty (Years)	5

Dimensions (Inches)

Length	47.2"
Diameter	Ø1.25"

Components

LED Light Source	SMD 2835
Driver	IKIO Internal Driver

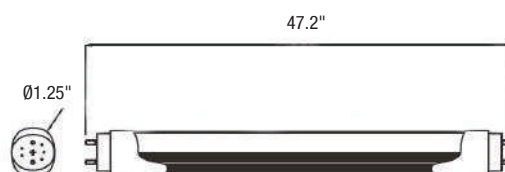
Construction

Housing	Aluminum
Cover Material / Lens	PC
Diffuser	Clear Frosted
Base / Power Supply	G13
Finish	White

Application Areas

Offices, Schools, Hospitals, Retail Stores, Lobbies, Residential Spaces.

*Specifications, Warranty, and Qualifications can vary per item/SKU. See technical data sheets (TDS) for specific information.





T8 U-Bend Tube

Type A&B

Electrical

Power	15 W
Voltage	100-277 V
Power Factor	≥ 0.90

Lighting Performance

Lumens	1950 lm
Efficacy	130 lm/W
Color Temperature (CCT)	4000 K 5000 K
Color Rendering (CRI)	80+
Beam Angle	180°
Dimmable Lighting Control	Non Dimmable

Environment

Operating Temperature	-22° F ~ +149° F
Ingress Protection Rating (IP)	IP20

Lifespan

Average Life (Hours)	50,000
Warranty (Years)	5 (10 Years Warranty Option Available)

Dimensions (Inches)

Length	11.92"
Width	5.9"
Thickness	0.80"

Components

LED Light Source	Everlight
Driver	IKIO Internal Driver

Construction

Housing	Aluminum and Polycarbonate
Diffuser	Frosted Clear
Base / Power Supply	G13 / Hard Wired
Finish	White

Application Areas

Schools, Offices, Hospitals, Hotels, Manufacturing Industrial Facilities, Residential Areas

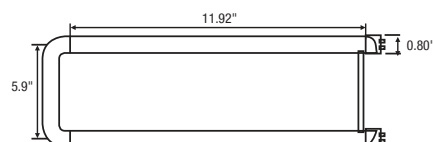
Qualifications and Certifications

Qualified Part Number	IK-T802U-0015
-----------------------	----------------------



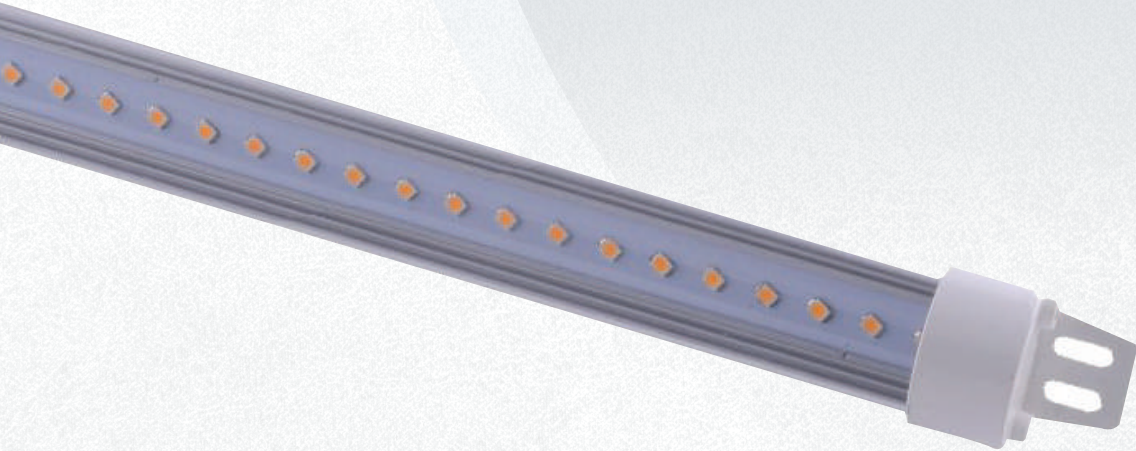
DesignLights Consortium® (DLC) Premium qualified product. Not all versions of this product may be DLC qualified. Please check the DLC Qualified Products List at www.designlights.org/QPL to confirm which versions are qualified.

*Specifications, Warranty, and Qualifications can vary per item/SKU. See technical data sheets (TDS) for specific information.



The text "Refrigeration Lights" is displayed in a large, white, sans-serif font. A vertical orange line is positioned to the left of the text. The background is a dimly lit, open refrigerator with various food items on the shelves, including a green container, a white bag, a jar, and several milk jugs on the door shelves.

Refrigeration Lights



Frizo

Refrigeration Light

Electrical

Power	8 W 13 W 15 W 18 W 22 W 20 W 22 W 30 W
Voltage	100-277 V
Power Factor	≥0.90

Lighting Performance

Lumens	880 lm 1625 lm 1875 lm 2520 lm 1760 lm 2300 lm 2860 lm 3900 lm
Efficacy	110 lm/W
Color Temperature (CCT)	5000 K
Color Rendering (CRI)	80
Beam Angle	120°
Dimmable Lighting Control	Non Dimmable

Environment

Operating Temperature	-4 °F ~ +140 °F
Suitable Location	DAMP
Ingress Protection Rating (IP)	IP66

Lifespan

Average Life (Hours)	50,000
Warranty (Years)	5

Dimensions (Inches)

	8 W 13 W	15 W 18 W 18 W	20 W 22 W	22 W 30 W
Size (Ft)	3'	4'	5'	6'
Length	36"	48"	60"	72"
Diameter	Ø1"	Ø1"	Ø1"	Ø1"

Construction

Housing	Aluminum and Polycarbonate
Base / Power Supply	Hard Wire
Finish	White
Diffuser	Clear Frosted

Application Areas

Ideal for large warehouses, retail applications, commercial buildings and work areas.

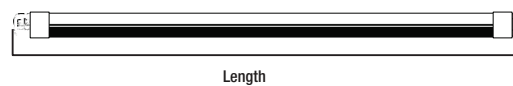
Qualifications and Certifications

Qualified Part Number	IK-RL
-----------------------	--------------



DesignLights Consortium® (DLC) Premium qualified product. Not all versions of this product may be DLC qualified. Please check the DLC Qualified Products List at www.designlights.org/QPL to confirm which versions are qualified.

*Specifications, Warranty, and Qualifications can vary per item/SKU. See technical data sheets (TDS) for specific information.





Linear Low Bays



Delphi²

CCT & Power Selectable | Linear Low Bay



Electrical

Power	15 W-18 W-22 W-25 W
Voltage	120-347 V
Power Factor	0.9

Lighting Performance

Lumens	1905 lm-2286 lm-2794 lm-3175 lm
Efficacy	127 lm/W
Color Temperature (CCT)	3500 K-4000 K-5000 K
Color Rendering (CRI)	80
Beam Angle	120°
Dimmable Lighting Control	Continuous Dimming to 10% or Below

Environment

Operating Temperature	-4 °F ~ +122 °F
Suitable Location	DAMP
Ingress Protection Rating (IP)	IP40

Lifespan

Average Life (Hours)	50,000
Warranty (Years)	5 (+5 Years Extended Warranty Option Available)

Dimensions (Inches)

Length	23.98"
Height	2.62"
Width	2.56"

Components

LED Light Source	SMD 2835
Driver	JUSIN LE25D1S-HA

Construction

Housing	Aluminum
Lens	Round (Stocked), Square (Optional)
Diffuser	Polycarbonate
Base / Power Supply	Hard Wired

Application Areas

Large warehouses, retail applications, commercial buildings, underground parking, walkways, mezzanine floor.

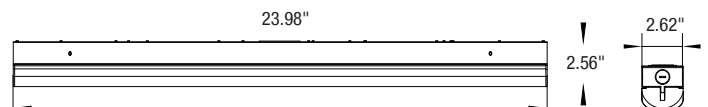
Qualifications and Certifications

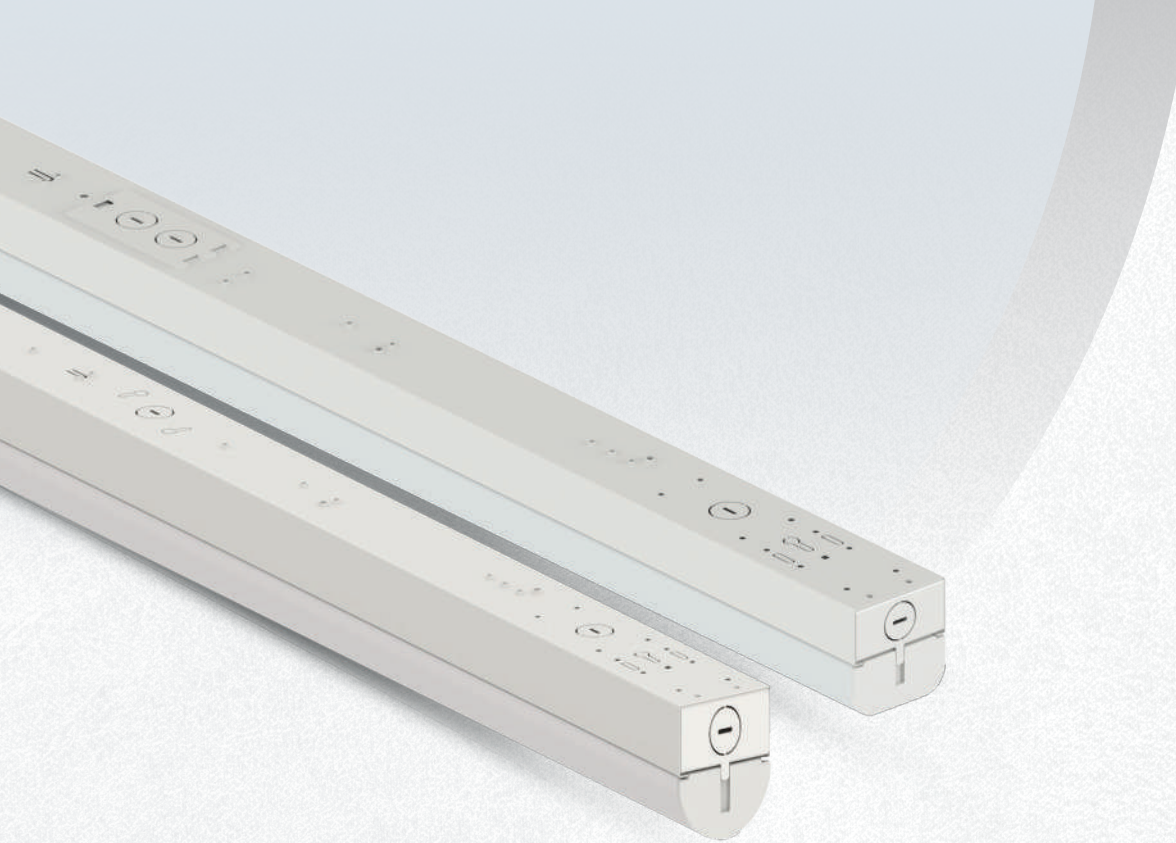
Qualified Part Number	IK-SL02R-15/18/22/25W-35/40/50KLV-C
-----------------------	--



DesignLights Consortium® (DLC) Premium qualified product. Not all versions of this product may be DLC qualified. Please check the DLC Qualified Products List at www.designlights.org/QPL to confirm which versions are qualified.

*Specifications, Warranty, and Qualifications can vary per item/SKU. See technical data sheets (TDS) for specific information.





Delphi 4'

CCT & Power Selectable | Linear Low Bay



Electrical

Power	30 W-36 W-40 W-50 W
Voltage	120-347 V
Power Factor	0.9

Lighting Performance

Lumens	3810 lm-4572 lm-5080 lm-6350 lm
Efficacy	127 lm/W
Color Temperature (CCT)	3500 K-4000 K-5000 K
Color Rendering (CRI)	80
Beam Angle	120°
Dimmable Lighting Control	Continuous Dimming to 10% or Below

Environment

Operating Temperature	-4 °F ~ +122 °F
Suitable Location	DAMP
Ingress Protection Rating (IP)	IP40

Lifespan

Average Life (Hours)	50,000
Warranty (Years)	5 (+5 Years Extended Warranty Option Available)

Dimensions (Inches)

Length	47.99"
Height	2.62"
Width	2.56"

Components

LED Light Source	SMD 2835
Driver	JUSIN LE25D1S-HA

Construction

Housing	Aluminum
Lens	Round (Stocked), Square (Optional)
Diffuser	Polycarbonate
Base / Power Supply	Hard Wired

Application Areas

Large warehouses, retail applications, commercial buildings, underground parking, walkways, mezzanine floor.

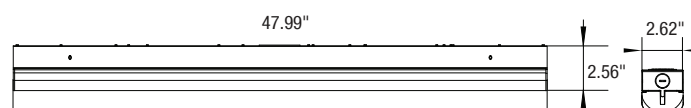
Qualifications and Certifications

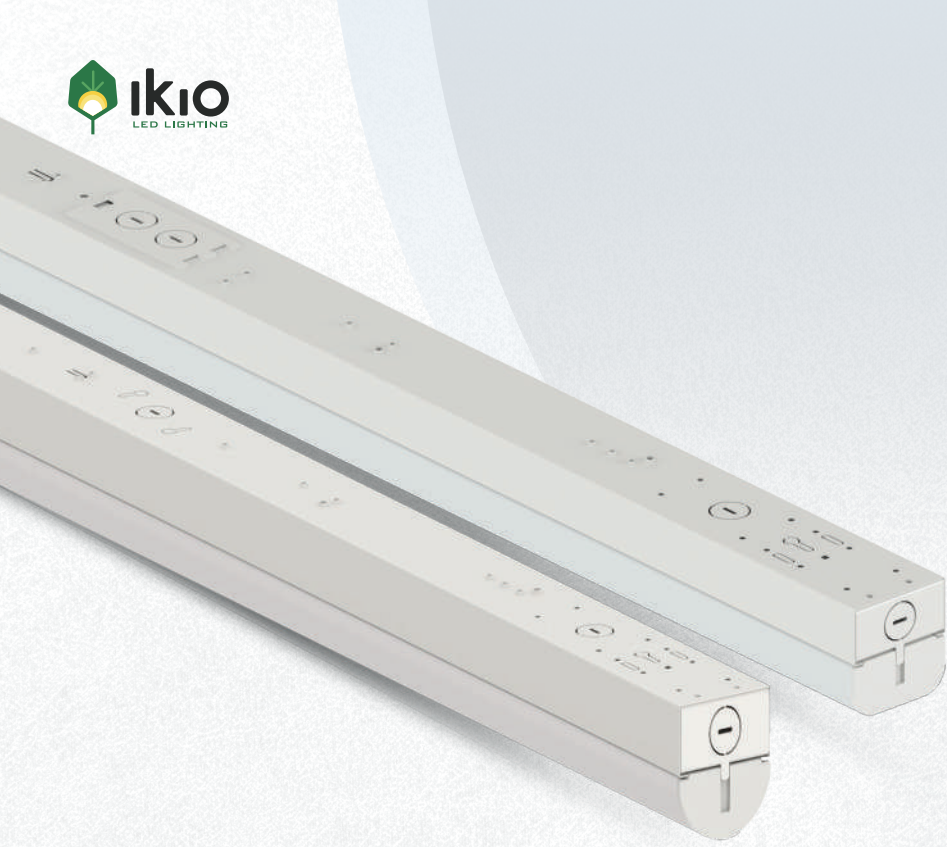
Qualified Part Number	IK-SL04R-30/36/40/50W-35/40/50KLK-C
-----------------------	--



DesignLights Consortium® (DLC) Premium qualified product. Not all versions of this product may be DLC qualified. Please check the DLC Qualified Products List at www.designlights.org/QPL to confirm which versions are qualified.

*Specifications, Warranty, and Qualifications can vary per item/SKU. See technical data sheets (TDS) for specific information.





Delphi 8'

CCT & Power Selectable | Linear Low Bay



Electrical

Power	60 W-68 W-72 W-80 W
Voltage	120-347 V
Power Factor	0.9

Lighting Performance

Lumens	7620 lm-8636 lm-9144 lm-10160 lm
Efficacy	127 lm/W
Color Temperature (CCT)	3500 K-4000 K-5000 K
Color Rendering (CRI)	80
Beam Angle	120°
Dimmable Lighting Control	Continuous Dimming to 10% or Below

Environment

Operating Temperature	-4 °F ~ +122 °F
Suitable Location	DAMP
Ingress Protection Rating (IP)	IP40

Lifespan

Average Life (Hours)	50,000
Warranty (Years)	5 (+5 Years Extended Warranty Option Available)

Dimensions (Inches)

Length	95.98"
Height	2.62"
Width	2.56"

Components

LED Light Source	SMD 2835
Driver	JUSIN LE80D1S-HA

Construction

Housing	Aluminum
Lens	Round (Stocked), Square (Optional)
Diffuser	Polycarbonate
Base / Power Supply	Hard Wired

Application Areas

Large warehouses, retail applications, commercial buildings, underground parking, walkways, mezzanine floor.

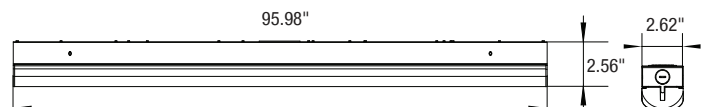
Qualifications and Certifications

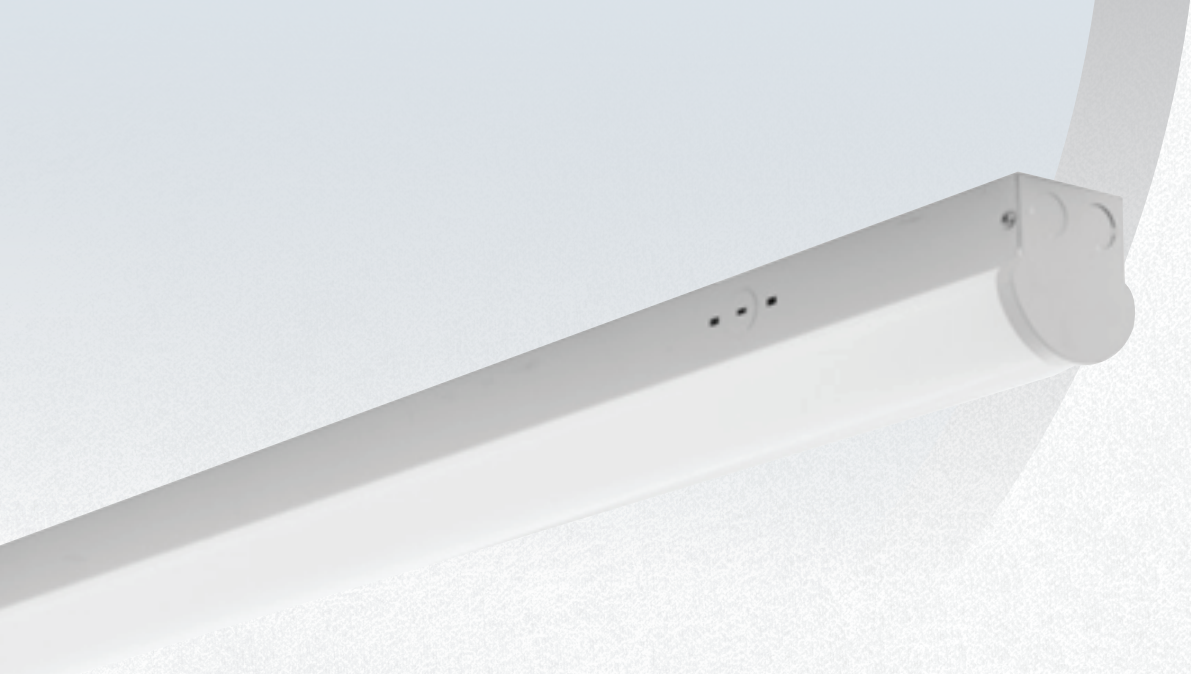
Qualified Part Number	IK-SL08R-60/68/72/80W-35/40/50KLV-C
-----------------------	--



DesignLights Consortium® (DLC) Premium qualified product. Not all versions of this product may be DLC qualified. Please check the DLC Qualified Products List at www.designlights.org/QPL to confirm which versions are qualified.

*Specifications, Warranty, and Qualifications can vary per item/SKU. See technical data sheets (TDS) for specific information.





Simplex

Linear Low Bay

Electrical

Power	40 W 60 W
Voltage	100-277 V
Power Factor	0.9

Lighting Performance

Lumens	5,400 lm 8,100 lm
Efficacy	135 lm/W
Color Temperature (CCT)	3000 K 3500 K 4000 K 5000 K
Color Rendering (CRI)	80+
Beam Angle	180°
Dimmable Lighting Control	0-10 V, Range 10% - 100%

Environment

Operating Temperature	-4 °F ~ +122 °F
Suitable Location	INDOOR
Ingress Protection Rating (IP)	IP40

Lifespan

Average Life (Hours)	50,000
Warranty (Years)	5 (7 Years / 10 Years Warranty Option Available)

Dimensions (Inches)

Length	48"
Height	3.35"
Width	3.56"

Components

LED Light Source	Seoul 3528
Driver	Meanwell

Construction

Housing	Aluminum and Metal sheet
Base / Power Supply	Hard Wire
Finish	White
Diffuser	Frosted

Application Areas

Ideal for large warehouses, retail applications, commercial buildings and work areas.

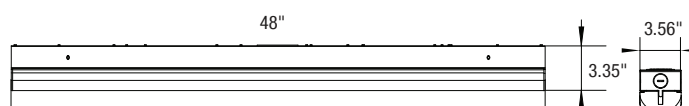
Qualifications and Certifications

Qualified Part Number	IK-ST04
-----------------------	----------------

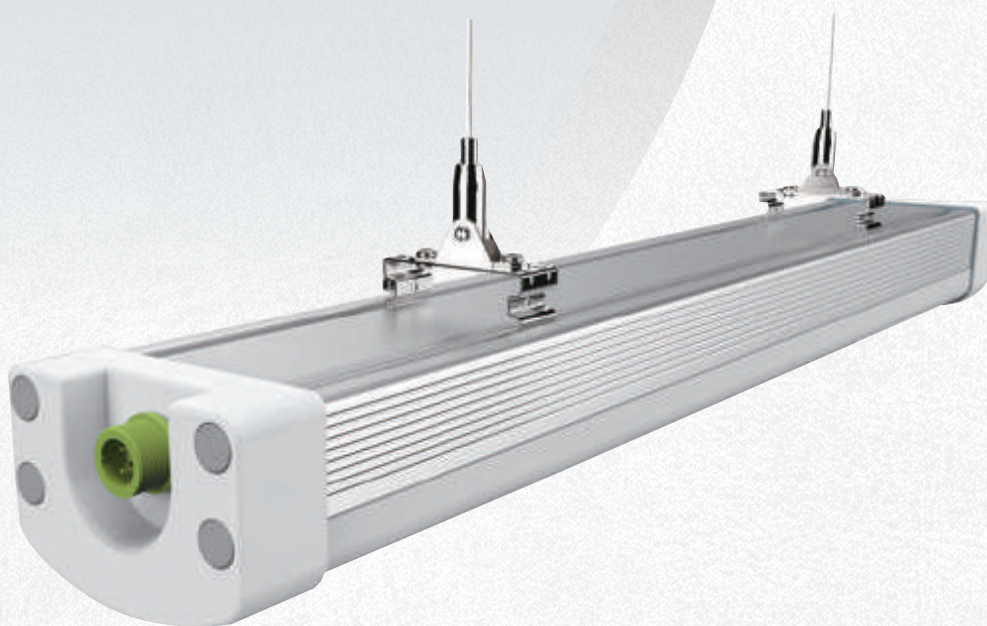


DesignLights Consortium® (DLC) Premium qualified product. Not all versions of this product may be DLC qualified. Please check the DLC Qualified Products List at www.designlights.org/QPL to confirm which versions are qualified.

*Specifications, Warranty, and Qualifications can vary per item/SKU. See technical data sheets (TDS) for specific information.



Tri-Proof Luminaires



Defenza

Tri-Proof Luminaire

Electrical

Power	20 W 40 W 60 W 90 W
Voltage	120-277 V
Power Factor	≥0.90

Lighting Performance

Lumens	2600 lm 5200 lm 7800 lm 11700 lm
Efficacy	130 lm/W
Color Temperature (CCT)	3000 K 4000 K 5000 K
Color Rendering (CRI)	80+
Beam Angle	120°
Dimmable Lighting Control	Continuous Dimming to 10% or Below (0-10 V)

Environment

Operating Temperature	-10 °F ~ +200 °F
Suitable Location	WET
Ingress Protection Rating (IP)	IP66

Dimensions (Inches)

	20 W	40 W	60 W 90 W
Size (Ft)	2'	4'	8'
Length	24"	48"	96"
Height	2.44"	2.44"	2.44"
Width	3.54"	3.54"	3.54"

Lifespan

Average Life (Hours)	50,000
Warranty (Years)	5

Construction

Housing	Aluminum and Polycarbonate
Base / Power Supply	Hard Wire
Finish	White
Diffuser	Frosted

Application Areas

Underground Parking Lots, Metro Stations, Airports, Schools, Subway, Stations, Stairwells, Tunnels, Hallways, Outdoor Playgrounds, Indoor, Stadiums

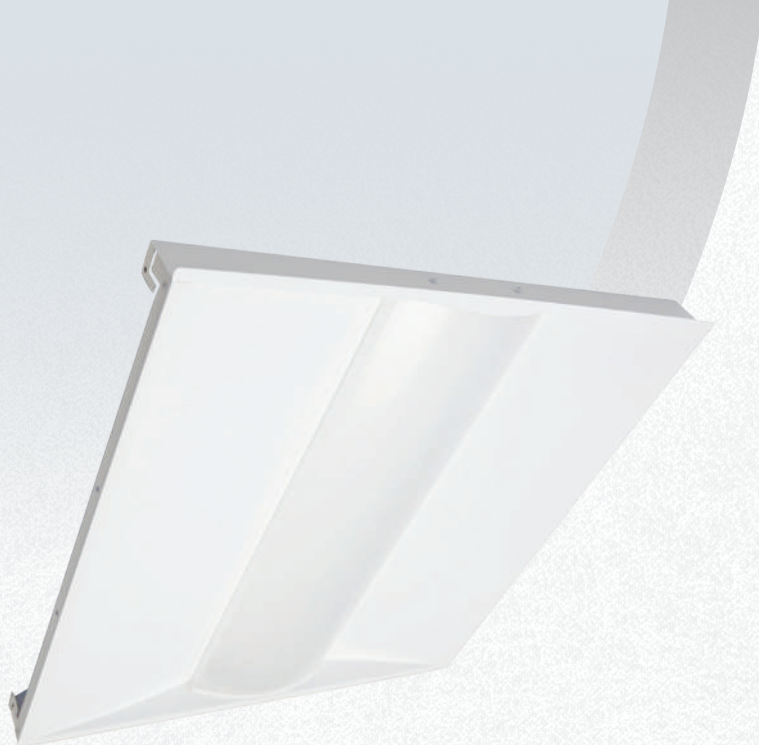
*Specifications, Warranty, and Qualifications can vary per item/SKU. See technical data sheets (TDS) for specific information.



Troffers

Architectural Troffers

Retrofit Troffers



Delphi 2'x2'

Architectural Troffers | CCT & Power Selectable



Electrical

Power	20 W-25 W-30 W
Voltage	120-277 V
Power Factor	0.9887

Lighting Performance

Lumens	2540 lm-3175 lm-3810 lm
Efficacy	127 lm/W
Color Temperature (CCT)	3500 K-4000 K-5000 K
Color Rendering (CRI)	82
Beam Angle	120°
Dimmable Lighting Control	0-10 V, Range 10%-100%

Environment

Operating Temperature	-4 °F ~ +122 °F
Suitable Location	DAMP
Ingress Protection (IP)	IP20

Dimensions (Inches)

Length	23.75"
Width	23.75"
Height	2.1"

Lifespan

Average Life (Hours)	50,000
Warranty (Years)	5 (+5 Years Extended Warranty Option Available)

Components

LED Light Source	Seoul 3528
Driver	Simon

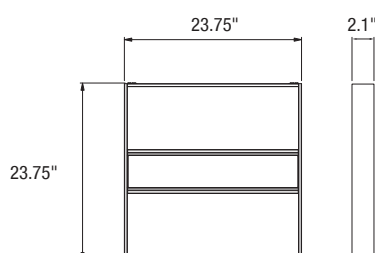
Construction

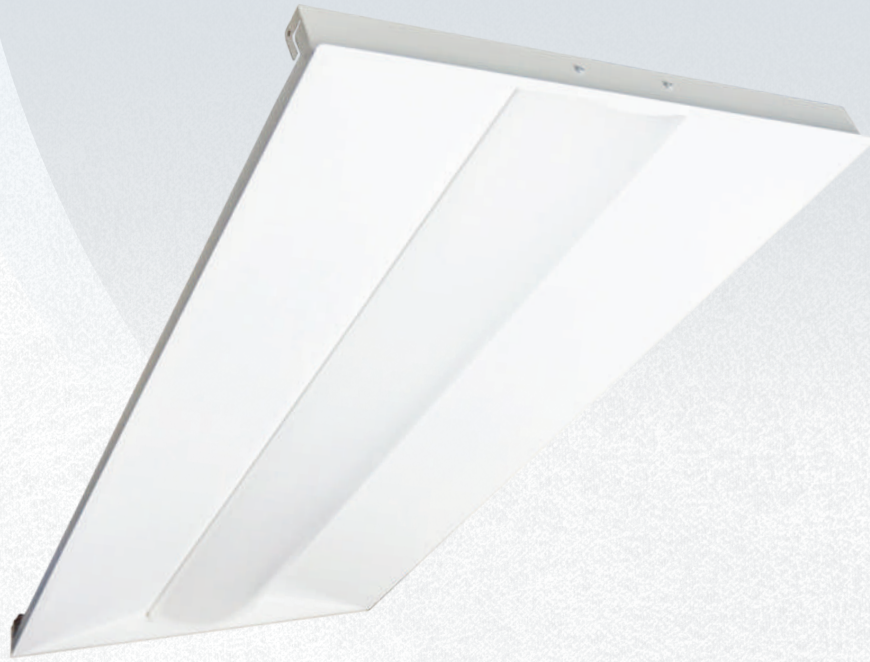
Housing	Galvanized Steel Plate
Cover Material / Lens	PMMA
Diffuser	Frosted
Finish	White

Application Areas

Offices, hallways, multipurpose rooms, and conference rooms.

*Specifications, Warranty, and Qualifications can vary per item/SKU. See technical data sheets (TDS) for specific information.





Delphi 2'x4'

Architectural Troffers | CCT & Power Selectable



Electrical

Power	25 W-30 W-35 W
Voltage	120-277 V
Power Factor	0.9932

Lighting Performance

Lumens	3175 lm-3810 lm-4445 lm
Efficacy	127 lm/W
Color Temperature (CCT)	3500 K-4000 K-5000 K
Color Rendering (CRI)	82
Beam Angle	120°
Dimmable Lighting Control	0-10 V, Range 10%-100%

Environment

Operating Temperature	-4 °F ~ +122 °F
Suitable Location	DAMP
Ingress Protection Rating (IP)	IP20

Lifespan

Average Life (Hours)	50,000
Warranty (Years)	5 (+5 Years Extended Warranty Option Available)

Components

LED Light Source	Seoul 3528
Driver	Simon

Construction

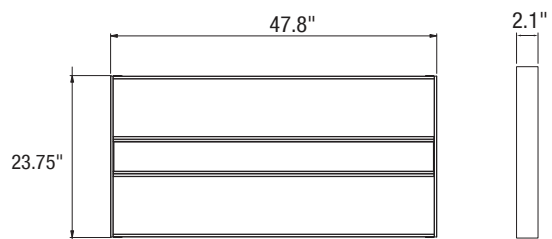
Housing	Galvanized Steel Plate
Cover Material / Lens	PMMA
Diffuser	Frosted
Finish	White

Application Areas

Offices, hallways, multipurpose rooms, and conference rooms.

*Specifications, Warranty, and Qualifications can vary per item/SKU. See technical data sheets (TDS) for specific information.

Length	47.8"
Width	23.75"
Height	2.1"





Smart Toucan **2'x2'**

Architectural Troffer



Electrical

Power	25 W
Voltage	120 - 277 V
Power Factor	0.995

Lighting Performance

Lumens	3125 lm
Efficacy	125 lm/W
Color Temperature (CCT)	3000 K 3500 K 4000 K 4500 K 5000 K
Color Rendering (CRI)	82.6
Beam Angle	120°
Dimmable Lighting Control	0-10 V, Continuous Dimming to 10% or below
Integral Controls	Yes
Sensor Type	Occupancy Sensor

Environment

Operating Temperature	-13 °F ~ + 122 °F
Suitable Location	DAMP
Ingress Protection Rating (IP)	IP20

Lifespan

Average Life (Hours)	50,000
Warranty (Years)	5 (+5 Years Extended Warranty Option Available)

Dimensions (Inches)

Length	23.74"
Width	23.74"
Height	2.17"

Components

LED Light Source	Samsung
Driver	Becky

Construction

Housing	Sheet
Cover Material / Lens	PC
Base / Power Supply	Hard Wire
Finish	White

Application Areas

Offices, hallways, multipurpose rooms, and conference rooms.

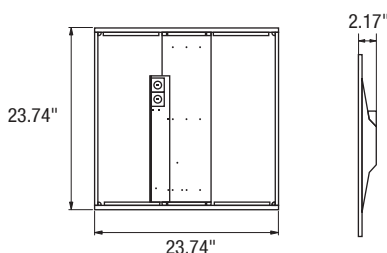
Qualifications and Certifications

Qualified Part Number	IK-AT22S-0025
-----------------------	----------------------



DesignLights Consortium® (DLC) Premium qualified product. Not all versions of this product may be DLC qualified. Please check the DLC Qualified Products List at www.designlights.org/QPL to confirm which versions are qualified.

*Specifications, Warranty, and Qualifications can vary per item/SKU. See technical data sheets (TDS) for specific information.





Smart Toucan **2'x4'**

Architectural Troffer



Electrical

Power	35 W
Voltage	120 - 277 V
Power Factor	0.995

Lighting Performance

Lumens	3750 lm
Efficacy	125 lm/W
Color Temperature (CCT)	3000 K 3500 K 4000 K 4500 K 5000 K
Color Rendering (CRI)	83.4
Beam Angle	120°
Dimmable Lighting Control	0-10 V, Continuous Dimming to 10% or below
Integral Controls	Yes
Sensor Type	Occupancy Sensor

Environment

Operating Temperature	-13 °F ~ + 122 °F
Suitable Location	DAMP
Ingress Protection Rating (IP)	IP20

Lifespan

Average Life (Hours)	50,000
Warranty (Years)	5 (+5 Years Extended Warranty Option Available)

Dimensions (Inches)

Length	47.76"
Width	23.74"
Height	2.17"

Components

LED Light Source	Samsung
Driver	Becky

Construction

Housing	Sheet
Cover Material / Lens	PC
Base / Power Supply	Hard Wire
Finish	White

Application Areas

Offices, hallways, multipurpose rooms, and conference rooms.

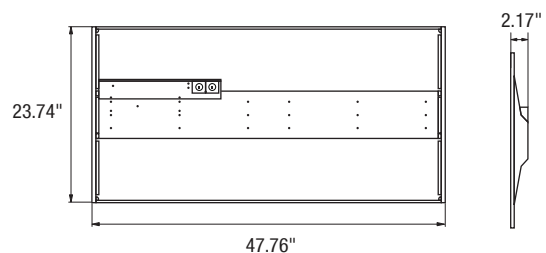
Qualifications and Certifications

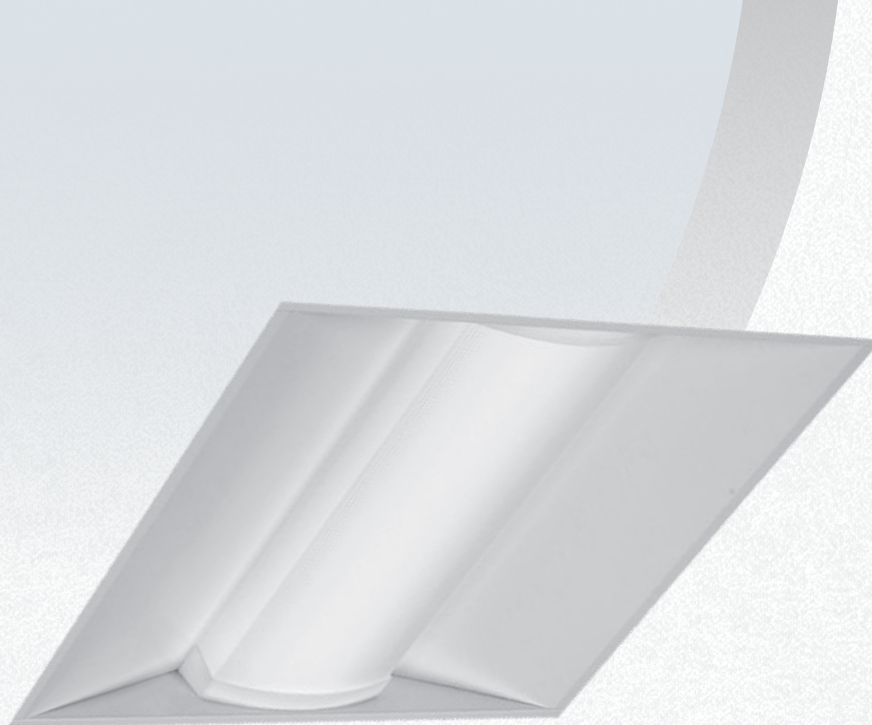
Qualified Part Number	IK-AT24S-0035
-----------------------	----------------------



DesignLights Consortium® (DLC) Premium qualified product. Not all versions of this product may be DLC qualified. Please check the DLC Qualified Products List at www.designlights.org/QPL to confirm which versions are qualified.

*Specifications, Warranty, and Qualifications can vary per item/SKU. See technical data sheets (TDS) for specific information.





Contrizza **2'x2'**

Architectural Troffer | CCT & Power Selectable



Electrical

Power	15 W-25 W-30 W-36 W
Voltage	100-277 V
Power Factor	≥ 0.90

Lighting Performance

Lumens	1875 lm-3125 lm-3750 lm-4500 lm
Efficacy	125 lm/W
Color Temperature (CCT)	3000 K-3500 K-4000 K-5000 K
Color Rendering (CRI)	80+
Beam Angle	120°
Dimmable Lighting Control	0-10 V, Range 10% - 100%

Environment

Operating Temperature	-04 °F ~ +122 °F
Suitable Location	DAMP
Ingress Protection Rating (IP)	IP40

Lifespan

Average Life (Hours)	50,000
Warranty (Years)	5

Dimensions (Inches)

Length	23.74"
Width	23.74"
Height	2.99"

Components

LED Light Source	Runlite
Driver	Lyford

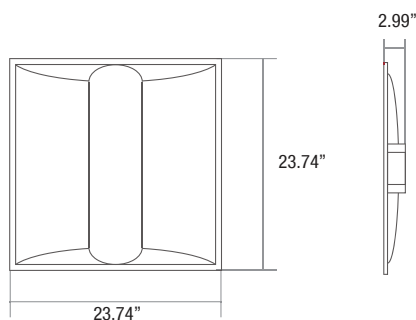
Construction

Housing	Aluminum
Lens	Polycarbonate
Base / Power Supply	Hard Wire / Surge Protector
Finish	White

Application Areas

Ideal for retail applications, commercial buildings and work areas.

*Specifications, Warranty, and Qualifications can vary per item/SKU. See technical data sheets (TDS) for specific information.





Contrizza **2'x4'**

Architectural Troffer | CCT & Power Selectable



Electrical

Power	20 W-30 W-36 W-40 W
Voltage	100-277 V
Power Factor	≥ 0.90

Lighting Performance

Lumens	2500 lm-3750 lm-4500 lm-5000 lm
Efficacy	125 lm/W
Color Temperature (CCT)	3000 K-3500 K-4000 K-5000 K
Color Rendering (CRI)	80+
Beam Angle	120°
Dimmable Lighting Control	0-10 V, Range 10% - 100%

Environment

Operating Temperature	-04 °F ~ +122 °F
Suitable Location	DAMP
Ingress Protection Rating (IP)	IP40

Lifespan

Average Life (Hours)	50,000
Warranty (Years)	5

Dimensions (Inches)

Length	47.75"
Width	23.70"
Height	2.99"

Components

LED Light Source	Runlite
Driver	Lyford

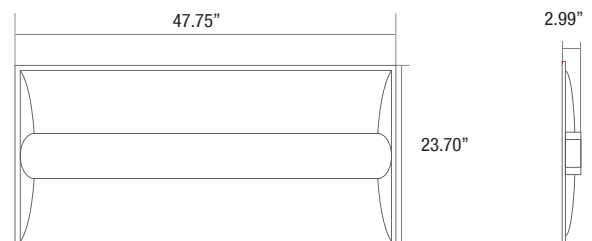
Construction

Housing	Aluminum
Lens	Polycarbonate
Base / Power Supply	Hard Wire / Surge Protector
Finish	White

Application Areas

Ideal for retail applications, commercial buildings and work areas.

*Specifications, Warranty, and Qualifications can vary per item/SKU. See technical data sheets (TDS) for specific information.





Delphi **2'x2'**

Retrofit Troffers | CCT & Power Selectable



Electrical

Power	20 W-25 W-30 W
Voltage	100-277 V
Power Factor	0.9

Lighting Performance

Lumens	2500 lm-3125 lm-3750 lm
Efficacy	125 lm/W
Color Temperature (CCT)	3500 K-4000 K-5000 K
Color Rendering (CRI)	82
Beam Angle	120°
Dimmable Lighting Control	Continuous Dimming to 10% or Below

Environment

Operating Temperature	-4 °F ~ +122 °F
Suitable Location	DAMP
Ingress Protection Rating (IP)	IP40

Lifespan

Average Life (Hours)	50,000
Warranty (Years)	5 (+5 Years Extended Warranty Option Available)

Dimensions (Inches)

Length	23.9"
Width	23.8"
Height	2.4"

Components

LED Light Source	Seoul 3528
Driver	Simon Driver

Construction

Housing	Aluminum / Metal Sheet
Diffuser	Frosted
Base / Power Supply	Hard Wire
Finish	Silver

Application Areas

Offices, hallways, multipurpose rooms, and conference rooms.

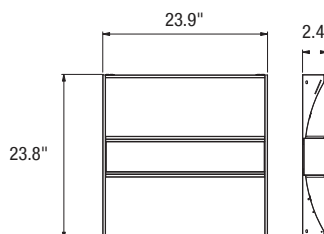
Qualifications and Certifications

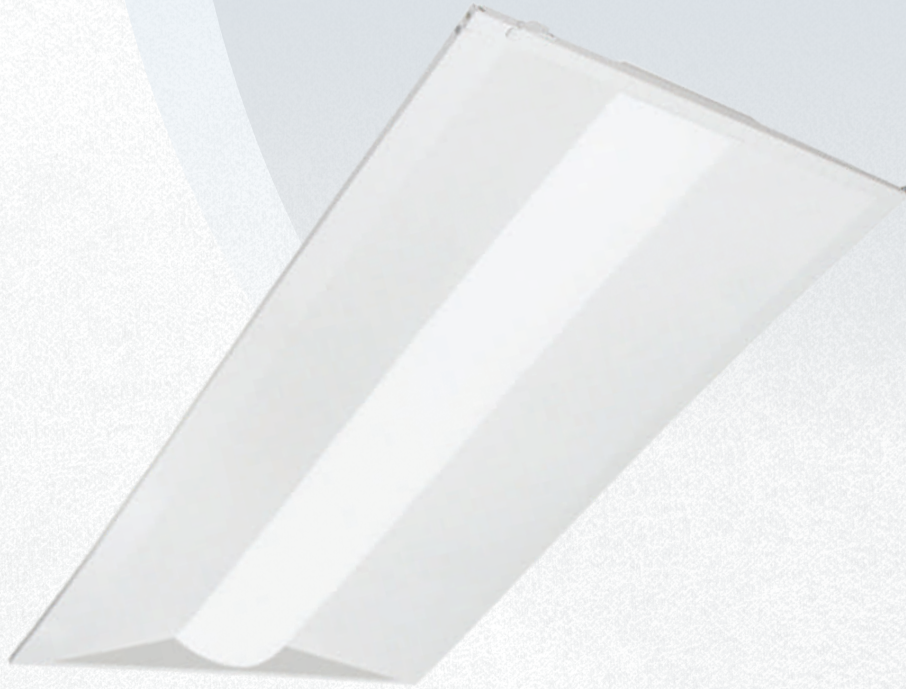
Qualified Part Number	IK-RT22E-202530-CCT-D
-----------------------	------------------------------



DesignLights Consortium® (DLC) Premium qualified product. Not all versions of this product may be DLC qualified. Please check the DLC Qualified Products List at www.designlights.org/QPL to confirm which versions are qualified.

*Specifications, Warranty, and Qualifications can vary per item/SKU. See technical data sheets (TDS) for specific information.





Delphi **2'x4'**

Retrofit Troffers | CCT & Power Selectable



Electrical

Power	25 W-30 W-34 W
Voltage	100-277 V
Power Factor	0.9

Lighting Performance

Lumens	3125 lm-3750 lm-4250 lm
Efficacy	125 lm/W
Color Temperature (CCT)	3500 K-4000 K-5000 K
Color Rendering (CRI)	82
Beam Angle	120°
Dimmable Lighting Control	Continuous Dimming to 10% or Below

Environment

Operating Temperature	-4 °F ~ +122 °F
Suitable Location	DAMP
Ingress Protection Rating (IP)	IP20

Lifespan

Average Life (Hours)	50,000
Warranty (Years)	5 (+5 Years Extended Warranty Option Available)

Dimensions (Inches)

Length	47.8"
Width	23.9"
Height	2.4"

Components

LED Light Source	Seoul 3528
Driver	Simon Driver

Construction

Housing	Aluminum / Metal Sheet
Diffuser	Frosted
Base / Power Supply	Hard Wire
Finish	Silver

Application Areas

Offices, hallways, multipurpose rooms, and conference rooms.

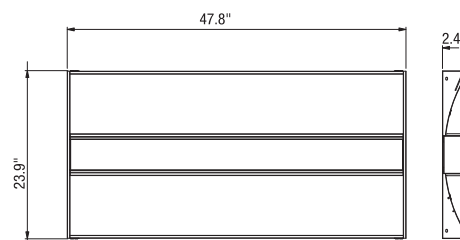
Qualifications and Certifications

Qualified Part Number	IK-RT24E-252530-CCT-D
-----------------------	------------------------------



DesignLights Consortium® (DLC) Premium qualified product. Not all versions of this product may be DLC qualified. Please check the DLC Qualified Products List at www.designlights.org/QPL to confirm which versions are qualified.

*Specifications, Warranty, and Qualifications can vary per item/SKU. See technical data sheets (TDS) for specific information.



| Panel Lights

Back-Lit Panel Lights

Edge-Lit Panel Lights



Delphi 1'x4'

Back-Lit Panel Light | CCT & Power Selectable



Electrical

Power	20 W-30 W-40 W
Voltage	120-277 V
Power Factor	0.9

Lighting Performance

Lumens	2500 lm-3750 lm-5000 lm
Efficacy	130 lm/W
Color Temperature (CCT)	3500 K-4000 K-5000 K
Color Rendering (CRI)	80
Beam Angle	120°
Dimmable Lighting Control	Continuous Dimming to 10% or Below

Environment

Operating Temperature	-14 °F ~ +133 °F
Suitable Location	DAMP
Ingress Protection Rating (IP)	IP20

Lifespan

Average Life (Hours)	75,000
Warranty (Years)	10

Components

LED Light Source	BRIDGELUX 2835
Driver	XZ Power

Construction

Housing	Aluminum
Diffuser	PC (Frosted)
Base / Power Supply	Hard Wired
Finish	White

Application Areas

Ideal for retrofitting inefficient fixtures in malls, hospitals, airports, offices, lobbies and other residential and commercial Spaces.

Qualifications and Certifications

Qualified Part Number	IK-BL 14-40/30/20-354050-YL
-----------------------	------------------------------------

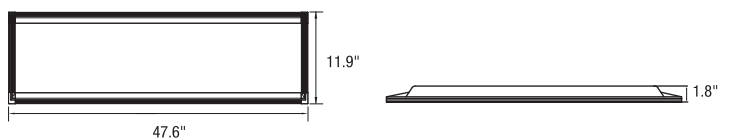


DesignLights Consortium® (DLC) Premium qualified product. Not all versions of this product may be DLC qualified. Please check the DLC Qualified Products List at www.designlights.org/QPL to confirm which versions are qualified.

*Specifications, Warranty, and Qualifications can vary per item/SKU. See technical data sheets (TDS) for specific information.

Dimensions (Inches)

Length	47.6"
Width	11.9"
Height	1.8"





Delphi **2'x2'**

Back-Lit Panel Light | CCT & Power Selectable



Electrical

Power	20 W-30 W-40 W
Voltage	120-277 V
Power Factor	0.9

Lighting Performance

Lumens	2500 lm-3750 lm-5000 lm
Efficacy	140 lm/W
Color Temperature (CCT)	3500 K-4000 K-5000 K
Color Rendering (CRI)	80
Beam Angle	120°
Dimmable Lighting Control	Continuous Dimming to 10% or Below

Environment

Operating Temperature	-14 °F ~ +133 °F
Suitable Location	DAMP
Ingress Protection Rating (IP)	IP20

Lifespan

Average Life (Hours)	75,000
Warranty (Years)	10

Dimensions (Inches)

Length	23.7"
Width	23.7"
Height	1.8"

Components

LED Light Source	BRIDGELUX 2835
Driver	XZ Power

Construction

Housing	Aluminum
Diffuser	PC (Frosted)
Base / Power Supply	Hard Wired
Finish	White

Application Areas

Ideal for retrofitting inefficient fixtures in malls, hospitals, airports, offices, lobbies and other residential and commercial Spaces.

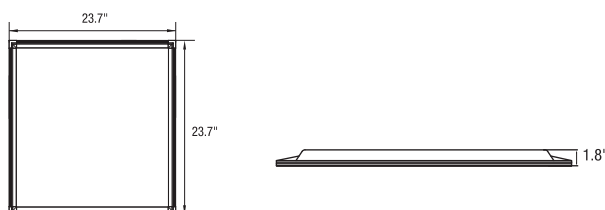
Qualifications and Certifications

Qualified Part Number	IK-BL22-40/30/20-354050-PLY
-----------------------	------------------------------------



DesignLights Consortium® (DLC) Premium qualified product. Not all versions of this product may be DLC qualified. Please check the DLC Qualified Products List at www.designlights.org/QPL to confirm which versions are qualified.

*Specifications, Warranty, and Qualifications can vary per item/SKU. See technical data sheets (TDS) for specific information.





Delphi **2'x4'**

Back-Lit Panel Light | CCT & Power Selectable



Electrical

Power	30 W-40 W-50 W
Voltage	120-277 V
Power Factor	0.9

Lighting Performance

Lumens	4174 lm-5363 lm-6443 lm
Efficacy	140 lm/W
Color Temperature (CCT)	3500 K-4000 K-5000 K
Color Rendering (CRI)	84
Beam Angle	120°
Dimmable Lighting Control	Continuous Dimming to 10% or Below

Environment

Operating Temperature	-14 °F ~ +133 °F
Suitable Location	DAMP
Ingress Protection Rating (IP)	IP20

Lifespan

Average Life (Hours)	75,000
Warranty (Years)	10

Components

LED Light Source	Bridgelux
Driver	XZ Power

Construction

Housing	Aluminum
Diffuser	PC (Frosted)
Base / Power Supply	Hard Wired
Finish	White

Application Areas

Ideal for retrofitting inefficient fixtures in malls, hospitals, airports, offices, lobbies and other residential and commercial Spaces.

Qualifications and Certifications

Qualified Part Number **IK-BL24-50/40/30-354050-YLY**

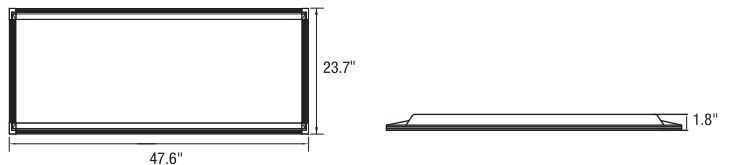


DesignLights Consortium® (DLC) Premium qualified product. Not all versions of this product may be DLC qualified. Please check the DLC Qualified Products List at www.designlights.org/QPL to confirm which versions are qualified.

*Specifications, Warranty, and Qualifications can vary per item/SKU. See technical data sheets (TDS) for specific information.

Dimensions (Inches)

Length	47.6"
Width	23.7"
Height	1.8"





Contrila **1'x4'**

Edge-Lit Panel Light | CCT & Power Selectable



Electrical

Power	20 W-25 W-30 W-35 W
Voltage	100-277 V
Power Factor	≥ 0.90

Lighting Performance

Lumens	2500 lm-3125 lm-3750 lm-4375 lm
Efficacy	125 lm/W
Color Temperature (CCT)	3000 K-3500 K-4000 K-5000 K
Color Rendering (CRI)	80+
Beam Angle	120°
Dimmable Lighting Control	0-10 V, Range 10% - 100%

Environment

Operating Temperature	-14 °F ~ +113 °F
Suitable Location	DAMP
Ingress Protection Rating (IP)	IP40

Lifespan

Average Life (Hours)	50,000
Warranty (Years)	5

Components

LED Light Source	Epistar
Driver	Lifud

Construction

Housing	Aluminum+High Quality LGP
Base / Power Supply	Hard Wired
Finish	White

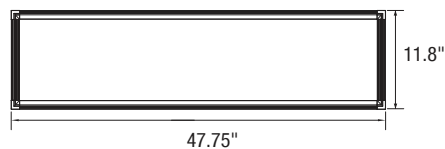
Application Areas

Malls, Hospitals, Airports, Offices, Lobbies, Residential Spaces, Commercial Spaces

*Specifications, Warranty, and Qualifications can vary per item/SKU. See technical data sheets (TDS) for specific information.

Dimensions (Inches)

Length	47.75"
Width	11.8"





Contrila ^{2'x2'}

Edge-Lit Panel Light | CCT & Power Selectable



Electrical

Power	20 W-30 W-36 W-40 W
Voltage	100-277 V
Power Factor	≥ 0.90

Lighting Performance

Lumens	2500 lm-3125 lm-3750 lm-4375 lm
Efficacy	125 lm/W
Color Temperature (CCT)	3000 K-3500 K-4000 K-5000 K
Color Rendering (CRI)	80+
Beam Angle	120°
Dimmable Lighting Control	0-10 V, Range 10% - 100%

Environment

Operating Temperature	-14 °F ~ +113 °F
Suitable Location	DAMP
Ingress Protection Rating (IP)	IP40

Dimensions (Inches)

Length	23.74"
Width	23.74"

Lifespan

Average Life (Hours)	50,000
Warranty (Years)	5

Components

LED Light Source	Epistar
Driver	Lifud

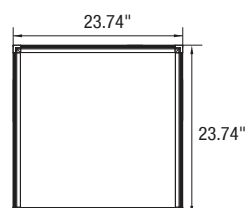
Construction

Housing	Aluminum+High Quality LGP
Base / Power Supply	Hard Wired
Finish	White

Application Areas

Malls, Hospitals, Airports, Offices, Lobbies, Residential Spaces, Commercial Spaces

*Specifications, Warranty, and Qualifications can vary per item/SKU. See technical data sheets (TDS) for specific information.





Contrila **2'x4'**

Edge-Lit Panel Light | CCT & Power Selectable



Electrical

Power	35 W-40 W-45 W-50 W
Voltage	100-277 V
Power Factor	≥ 0.90

Lighting Performance

Lumens	4375 lm-5000 lm-5625 lm-6250 lm
Efficacy	125 lm/W
Color Temperature (CCT)	3000 K-3500 K-4000 K-5000 K
Color Rendering (CRI)	80+
Beam Angle	120°
Dimmable Lighting Control	0-10 V, Range 10% - 100%

Environment

Operating Temperature	-14 °F ~ +113 °F
Suitable Location	DAMP
Ingress Protection Rating (IP)	IP40

Lifespan

Average Life (Hours)	50,000
Warranty (Years)	5

Components

LED Light Source	Epistar
Driver	Lifud

Construction

Housing	Aluminum+High Quality LGP
Base / Power Supply	Hard Wired
Finish	White

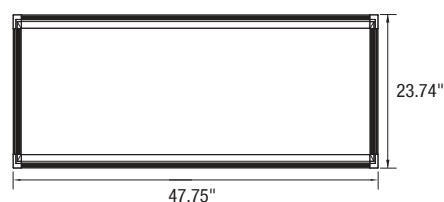
Application Areas

Malls, Hospitals, Airports, Offices, Lobbies, Residential Spaces, Commercial Spaces

*Specifications, Warranty, and Qualifications can vary per item/SKU. See technical data sheets (TDS) for specific information.

Dimensions (Inches)

Length	47.75"
Width	23.74"





Coloris 1'x4'

Edge-Lit Panel Light | RGBW

Electrical

Power	36 W
Voltage	100-277 V
Power Factor	≥ 0.90

Lighting Performance

Lumens	4680 lm
Efficacy	130 lm/W
Color Temperature (CCT)	Red, Green, Blue, Cool White & Warm White
Color Rendering (CRI)	80+
Beam Angle	120°

Environment

Operating Temperature	-14 °F ~ +113 °F
Suitable Location	DAMP
Ingress Protection Rating (IP)	IP20

Lifespan

Average Life (Hours)	50,000
Warranty (Years)	5

Components

LED Light Source	Epistar
Driver	Yibo

Construction

Housing	Aluminum
Diffuser	PC (Frosted)
Base / Power Supply	Hard Wired
Finish	White

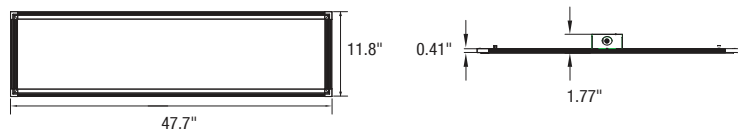
Application Areas

Malls, Hospitals, Airports, Offices, Lobbies, Residential Spaces, Commercial Spaces

*Specifications, Warranty, and Qualifications can vary per item/SKU. See technical data sheets (TDS) for specific information.

Dimensions (Inches)

Length	47.7"
Width	11.8"
Height with Driver	1.77"
Height	0.41"





Coloris **2'x2'**

Edge-Lit Panel Light | **RGBW**

Electrical

Power	36 W
Voltage	100-277 V
Power Factor	≥ 0.90

Lighting Performance

Lumens	4680 lm
Efficacy	130 lm/W
Color Temperature (CCT)	Red, Green, Blue, Cool White & Warm White
Color Rendering (CRI)	80+
Beam Angle	120°

Environment

Operating Temperature	-14 °F ~ +113 °F
Suitable Location	DAMP
Ingress Protection Rating (IP)	IP20

Lifespan

Average Life (Hours)	50,000
Warranty (Years)	5

Components

LED Light Source	Epistar
Driver	Yibo

Construction

Housing	Aluminum
Diffuser	PC (Frosted)
Base / Power Supply	Hard Wired
Finish	White

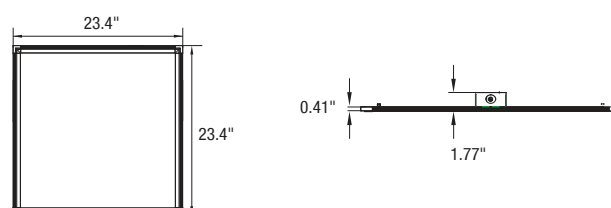
Application Areas

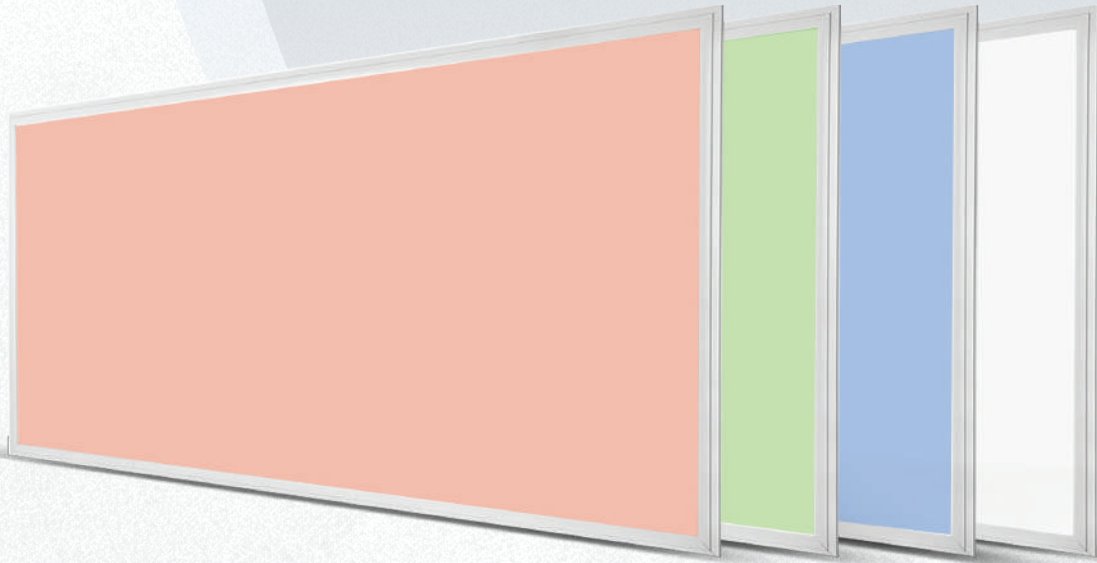
Malls, Hospitals, Airports, Offices, Lobbies, Residential Spaces, Commercial Spaces

*Specifications, Warranty, and Qualifications can vary per item/SKU. See technical data sheets (TDS) for specific information.

Dimensions (Inches)

Length	23.4"
Width	23.4"
Height with Driver	1.77"
Height	0.41"





Coloris 2'x4'

Edge-Lit Panel Light | RGBW

Electrical

Power	60 W
Voltage	100-277 V
Power Factor	≥ 0.90

Lighting Performance

Lumens	7800 lm
Efficacy	130 lm/W
Color Temperature (CCT)	Red, Green, Blue, Cool White & Warm White
Color Rendering (CRI)	80+
Beam Angle	120°
Dimmable Lighting Control	0-10 V, Range 10% - 100%

Environment

Operating Temperature	-14 °F ~ +113 °F
Suitable Location	DAMP
Ingress Protection Rating (IP)	IP20

Lifespan

Average Life (Hours)	50,000
Warranty (Years)	5

Components

LED Light Source	Epistar
Driver	Yibo

Construction

Housing	Aluminum
Diffuser	PC (Frosted)
Base / Power Supply	Hard Wired
Finish	White

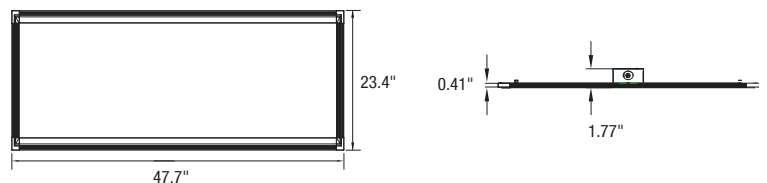
Application Areas

Malls, Hospitals, Airports, Offices, Lobbies, Residential Spaces, Commercial Spaces

*Specifications, Warranty, and Qualifications can vary per item/SKU. See technical data sheets (TDS) for specific information.

Dimensions (Inches)

Length	47.7"
Width	23.4"
Height with Driver	1.77"
Height	0.41"



| Downlights

6" Downlight

8" Downlight

10" Downlight



Orwin 6"

Downlight



Electrical

Power	12 W-17 W-22 W
Voltage	120-277 V
Power Factor	0.979

Lighting Performance

Lumens	1200 lm-1700 lm-2200 lm
Efficacy	100 lm/W
Color Temperature (CCT)	2700 K-3000 K-3500 K-4000 K-5000 K
Color Rendering (CRI)	94.3
Beam Angle	100°
Dimmable Lighting Control	0-10 V, Range 10%-100%

Environment

Operating Temperature	14 °F ~ +122 °F
Suitable Location	WET
Ingress Protection Rating (IP)	IP44
Impact Protection (IK)	IK08

Dimensions (Inches)

Length	4.17"
Diameter	Ø8.42"

Lifespan

Average Life (Hours)	50,000
Warranty (Years)	5

Components

LED Light Source	HL-AS-2835HW-2C-S1-08-PCT-HR3
Driver	IKIO Internal Driver

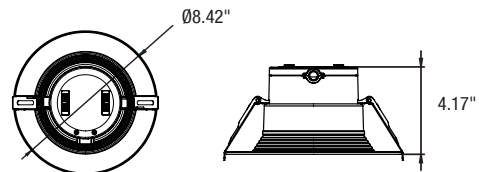
Construction

Housing	Aluminum
Lens	Frosted
Base / Power Supply	E26/GU24
Finish	White

Application Areas

Retail Stores, Restaurants, Hotels, Malls, Offices, Lobbies.

* Specifications, Warranty, and Qualifications can vary per item/SKU. See technical data sheets (TDS) for specific information.





Orwin 8"

Downlight



Electrical

Power	17 W-24 W-30 W
Voltage	120-277 V
Power Factor	0.979

Lighting Performance

Lumens	1870 lm-2640 lm-3150 lm
Efficacy	110 lm/W
Color Temperature (CCT)	3000 K-4000 K-5000 K
Color Rendering (CRI)	94.3
Beam Angle	100°
Dimmable Lighting Control	0-10 V, Range 10%-100%

Environment

Operating Temperature	14 °F ~ +122 °F
Suitable Location	WET
Ingress Protection Rating (IP)	IP44
Impact Protection (IK)	IK08

Dimensions (Inches)

Length	4.911"
Diameter	Ø10.03"

Lifespan

Average Life (Hours)	50,000
Warranty (Years)	5

Components

LED Light Source	HL-AS-2835HW-2C-S1-08-PCT-HR3
Driver	IKIO Internal Driver

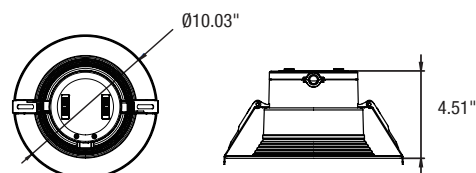
Construction

Housing	Aluminum
Lens	Frosted
Base / Power Supply	E26/GU24
Finish	White

Application Areas

Retail Stores, Restaurants, Hotels, Malls, Offices, Lobbies.

* Specifications, Warranty, and Qualifications can vary per item/SKU. See technical data sheets (TDS) for specific information.





Orwin 10"

Downlight



Electrical

Power	22 W-30 W-38 W
Voltage	120-277 V
Power Factor	0.979

Lighting Performance

Lumens	2310 lm-3610 lm-3800 lm
Efficacy	105 lm/W
Color Temperature (CCT)	2700 K-3000 K-3500 K-4000 K-5000 K
Color Rendering (CRI)	94.3
Beam Angle	100°
Dimmable Lighting Control	0-10 V, Range 10%-100%

Environment

Operating Temperature	14 °F ~ +122 °F
Suitable Location	WET
Ingress Protection Rating (IP)	IP44
Impact Protection (IK)	IK08

Dimensions (Inches)

Length	4.911"
Diameter	Ø11.378"

Lifespan

Average Life (Hours)	50,000
Warranty (Years)	5

Components

LED Light Source	HL-AS-2835HW-2C-S1-08-PCT-HR3
Driver	IKIO Internal Driver

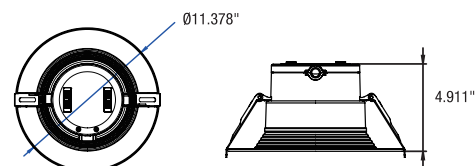
Construction

Housing	Aluminum
Lens	Frosted
Base / Power Supply	E26/GU24
Finish	White

Application Areas

Retail Stores, Restaurants, Hotels, Malls, Offices, Lobbies.

* Specifications, Warranty, and Qualifications can vary per item/SKU. See technical data sheets (TDS) for specific information.



| Retrofit Lamps

Low Bay Lamps

High Bay Lamps

Corn Bulbs



Paxon

Retrofit Low Bay Lamp

Electrical

Power	40 W 60 W
Voltage	100-277 V
Power Factor	0.93

Lighting Performance

Lumens	4672.4 lm
Efficacy	119.5 lm/W
Color Temperature (CCT)	4000 K 5000 K
Color Rendering (CRI)	83
Beam Angle	360°
Dimmable Lighting Control	Continuous Dimming to 10% or Below

Environment

Operating Temperature	-27 °F ~ +130 °F
Ingress Protection Rating (IP)	IP65

Lifespan

Average Life (Hours)	50,000
Warranty (Years)	5

Dimensions (Inches)

Height	6.88"
Diameter	Ø8.07"

Construction

Housing	Aluminum and Polycarbonate
Base / Power Supply	Hard Wired (Screw-in to Existing Fixture)
Diffuser	Clear
Finish	White

Application Areas

Outdoor Lighting, Warehouses, Parking Lots, Manufacturing Plants

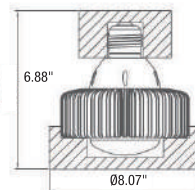
Qualifications and Certifications

Qualified Part Number	IK-LBKT-0040
-----------------------	---------------------



DesignLights Consortium® (DLC) Premium qualified product. Not all versions of this product may be DLC qualified. Please check the DLC Qualified Products List at www.designlights.org/QPL to confirm which versions are qualified.

*Specifications, Warranty, and Qualifications can vary per item/SKU. See technical data sheets (TDS) for specific information.





Campana

Retrofit High Bay Lamp

Electrical

Power	100 W 120 W 150 W
Voltage	100-277 V
Power Factor	≥ 0.90

Lighting Performance

Lumens	11507 lm 14035 lm 17929 lm
Efficacy	116.93 lm/W 119.55 lm/W 119.61 lm/W
Color Temperature (CCT)	5000 K
Color Rendering (CRI)	84.2
Beam Angle	360°
Dimmable Lighting Control	Non Dimmable

Environment

Operating Temperature	-20 °F ~ +140 °F
Ingress Protection Rating (IP)	IP65

Lifespan

Average Life (Hours)	50,000
Warranty (Years)	5

Dimensions (Inches)

Height	8.92"
Diameter	Ø8.07"

Construction

Housing	Aluminum and Polycarbonate
Base / Power Supply	Hard Wired
Diffuser	Clear
Finish	White

Application Areas

Outdoor Lighting, Warehouses, Parking Lots, Manufacturing Plants.

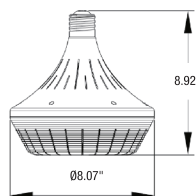
Qualifications and Certifications

Qualified Part Number	IK-HBKT-L120
-----------------------	---------------------



DesignLights Consortium® (DLC) Premium qualified product. Not all versions of this product may be DLC qualified. Please check the DLC Qualified Products List at www.designlights.org/QPL to confirm which versions are qualified.

*Specifications, Warranty, and Qualifications can vary per item/SKU. See technical data sheets (TDS) for specific information.





Spelta

Corn Bulb | Retrofit Lamps

Electrical

Power	14 W 27 W 36 W
Voltage	100-277 V
Power Factor	≥ 0.90

Lighting Performance

Lumens	1680 lm 3240 lm 4320 lm
Efficacy	120 lm/W
Color Temperature (CCT)	3000 K 3500 K 4000 K 5000 K
Color Rendering (CRI)	80+
Beam Angle	360°
Dimmable Lighting Control	Continuous Dimming to 10% or Below (0-10 V)

Environment

Operating Temperature	-20.2 °F ~ +140 °F
Suitable Location	DAMP
Ingress Protection Rating (IP)	IP64

Dimensions (Inches)

Height	10.43"
Width / Diameter	Ø6.04"

Lifespan

Average Life (Hours)	50,000
Warranty (Years)	5

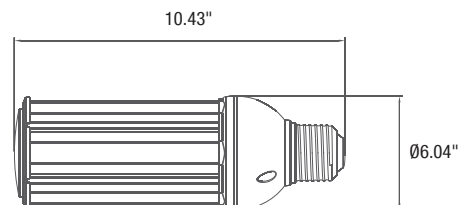
Construction

Housing	Aluminum and Polycarbonate
Base / Power Supply	Hard Wired / E26 or E(X)39
Diffuser	Clear
Finish	White

Application Areas

Outside Lighting, Walkways, Lamps

*Specifications, Warranty, and Qualifications can vary per item/SKU. See technical data sheets (TDS) for specific information.





Spelta Pro

Corn Bulb | Retrofit Lamps

Electrical

Power	80 W 100 W 120 W
Voltage	100-277 V
Power Factor	≥ 0.90

Lighting Performance

Lumens	9600 lm 12000 lm 14400 lm
Efficacy	120 lm/W
Color Temperature (CCT)	3000 K 3500 K 4000 K 5000 K
Color Rendering (CRI)	80+
Beam Angle	360°
Dimmable Lighting Control	Continuous Dimming to 10% or Below

Environment

Operating Temperature	-20 °F ~ +140 °F
Suitable Location	DAMP
Ingress Protection Rating (IP)	IP64

Lifespan

Average Life (Hours)	50,000
Warranty (Years)	5

Dimensions (Inches)

Height	11.00"
Width / Diameter	Ø5.74"

Construction

Housing	Aluminum and Polycarbonate
Lens	Polycarbonate
Base / Power Supply	Hard Wired / E26 or E(X)39
Diffuser	Clear
Finish	White

Application Areas

Outside Lighting, Walkways, Lamps

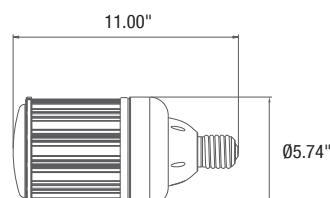
Qualifications and Certifications

Qualified Part Number	IK-CRA-L120
-----------------------	--------------------



DesignLights Consortium® (DLC) Premium qualified product. Not all versions of this product may be DLC qualified. Please check the DLC Qualified Products List at www.designlights.org/QPL to confirm which versions are qualified.

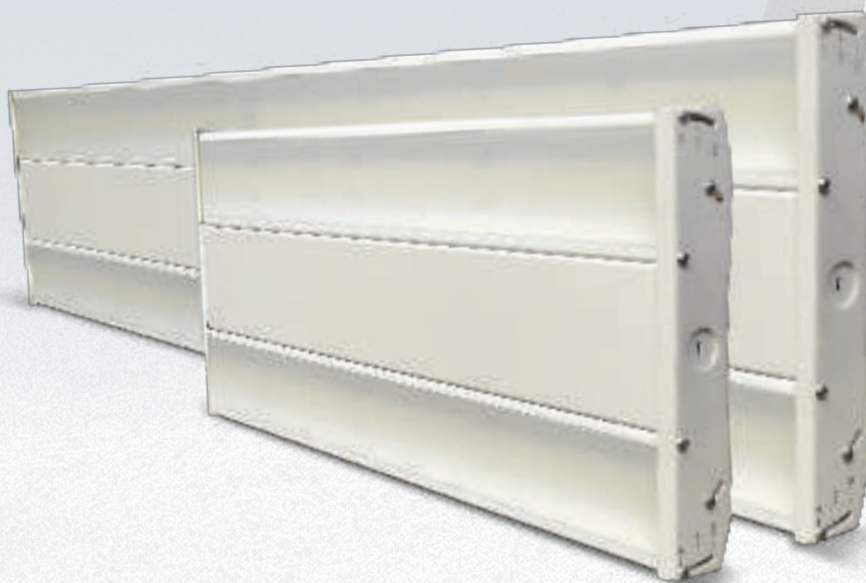
*Specifications, Warranty, and Qualifications can vary per item/SKU. See technical data sheets (TDS) for specific information.



| High Bays

Linear High Bays

UFO High Bays



Amplin

Linear High Bay

Electrical

Power	75 W 100 W 150 W 200 W 240 W 300 W 400 W
Voltage	100-277 V (Also 277-480 V, 346-480 V fixtures available)
Power Factor	0.9988

Lighting Performance

Lumens	11250 lm 15000 lm 22500 lm 30000 lm 36000 lm 45000 lm 60000 lm
Efficacy	150 lm/W
Color Temperature (CCT)	4000 K 5000 K
Color Rendering (CRI)	80+
Beam Angle	120°
Light Distribution	Type VS
Dimmable Lighting Control	0-10 V, Range 10% - 100%

Environment

Operating Temperature	-10 °F ~ +120 °F
Suitable Location	DAMP
Ingress Protection Rating (IP)	IP54

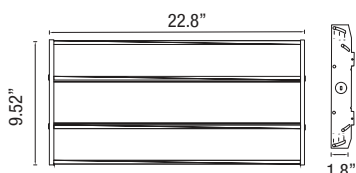
Lifespan

Average Life (Hours)	75,000
Warranty (Years)	7

Dimensions (Inches)

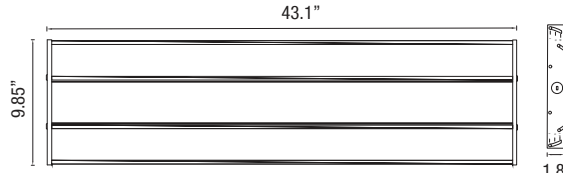
75 W - 100 W - 150 W

Length	22.8"
Width	9.52"
Height	1.8"



200 W - 240 W - 300 W - 400 W

Length	43.1"
Width	9.85"
Height	1.8"



Components

LED Light Source	Bridgelux 2835
Driver	Meanwell

Construction

Housing	C.R.S. Powder Coated
Heat Sink	Aluminum
Base / Power Supply	Hard Wire
Diffuser	Polycarbonate
Finish	White

Application Areas

Arenas, Gymnasiums, Plazas, Airports, Courtyards, Retail Spaces.

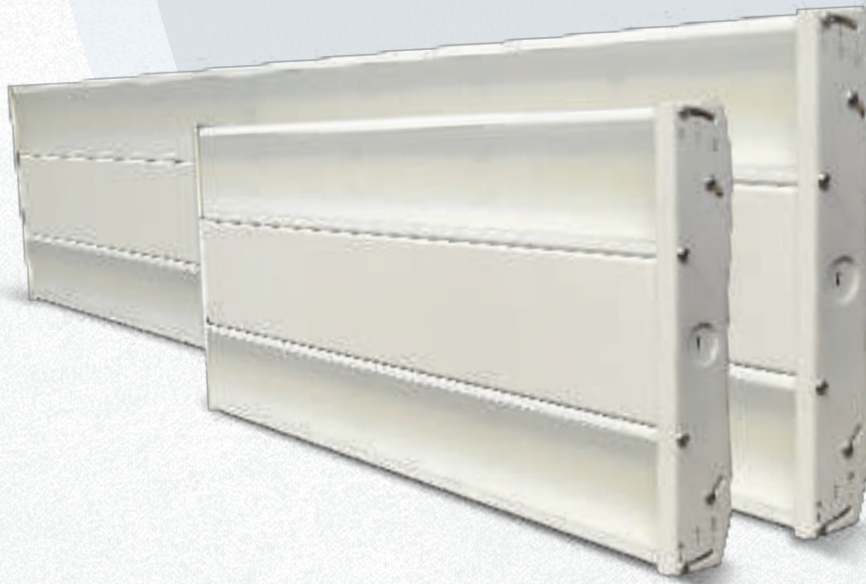
Qualifications and Certifications

Qualified Part Number	IK-HBAX
-----------------------	----------------



DesignLights Consortium® (DLC) Premium qualified product. Not all versions of this product may be DLC qualified. Please check the DLC Qualified Products List at www.designlights.org/ QPL to confirm which versions are qualified.

*Specifications, Warranty, and Qualifications can vary per item/SKU. See technical data sheets (TDS) for specific information.



Rizon

Linear High Bay | Power Selectable



Electrical

Power	Variant 1: 75 W-100 W-150 W Variant 2: 200 W-240 W-300 W
Voltage	100-277 V
Power Factor	0.96

Lighting Performance

Lumens	Variant 1: 11250 lm 15000 lm 22500 lm Variant 2: 30000 lm 36000 lm 45000 lm
Efficacy	140 lm/W
Color Temperature (CCT)	5000 K
Color Rendering (CRI)	80+
Beam Angle	120°
Light Distribution	Type VS
Dimmable Lighting Control	0-10 V, Range 10% - 100%

Environment

Operating Temperature	-10 °F ~ +120 °F
Suitable Location	DAMP
Ingress Protection Rating (IP)	IP40

Lifespan

Average Life (Hours)	75,000
Warranty (Years)	7 (10 Years Warranty Option Available)

Components

LED Light Source	Bridgelux 2835
Driver	Meanwell

Construction

Housing	C.R.S. Powder Coated
Heat Sink	Aluminum
Base / Power Supply	Hard Wire
Diffuser	Polycarbonate
Finish	White

Application Areas

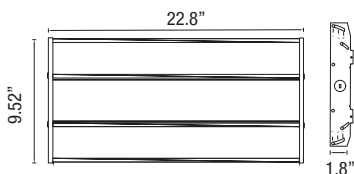
Arenas, Gymnasiums, Plazas, Airports, Courtyards, Retail Spaces.

*Specifications, Warranty, and Qualifications can vary per item/SKU. See technical data sheets (TDS) for specific information.

Dimensions (Inches)

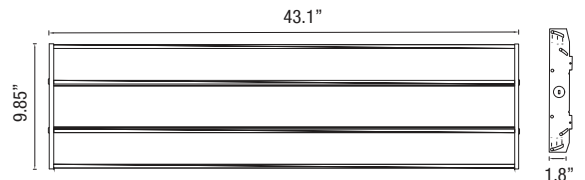
75 W - 100 W - 150 W

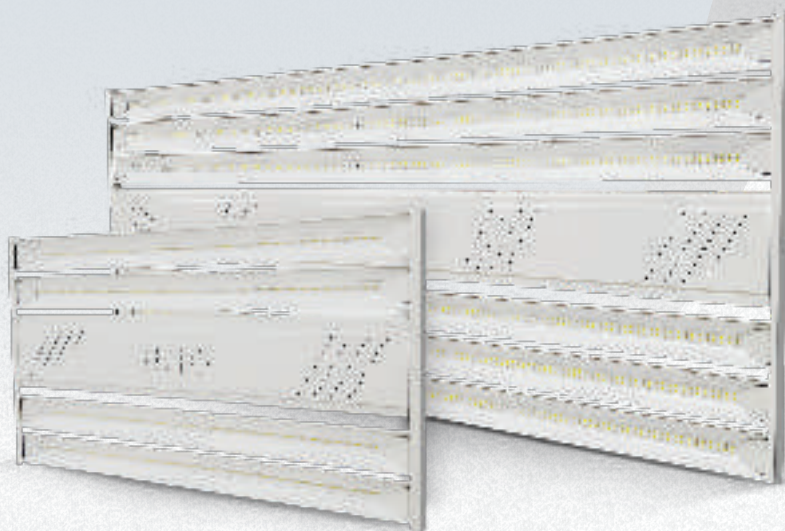
Length	22.8"
Width	9.52"
Height	1.8"



200 W - 240 W - 300 W - 400 W

Length	43.1"
Width	9.85"
Height	1.8"





Superia

Linear High Bay

Electrical

Power	60 W 100 W 200 W
Voltage	100-277 V
Power Factor	≥ 0.90

Lighting Performance

Lumens	12000 lm 20000 lm 40000 lm
Efficacy	200 lm/W
Color Temperature (CCT)	5000 K
Color Rendering (CRI)	80+
Beam Angle	120°
Light Distribution	Type VS
Dimmable Lighting Control	0-10 V, Range 10% - 100%

Environment

Operating Temperature	-10 °F ~ +120 °F
Suitable Location	DAMP
Ingress Protection Rating (IP)	IP40

Lifespan

Average Life (Hours)	100,000
Warranty (Years)	10

Components

LED Light Source	Edison Opto 2835
Driver	Meanwell

Construction

Housing	Aluminum
Lens	Polycarbonate
Base / Power Supply	Hard Wire
Finish	White
Diffuser	Polycarbonate (Clear Frosted Options)

Application Areas

Large Warehouses, Retail Applications, Commercial Buildings, Work Areas.

Qualifications and Certifications

Qualified Part Number	IK-HBPX-L200
-----------------------	---------------------

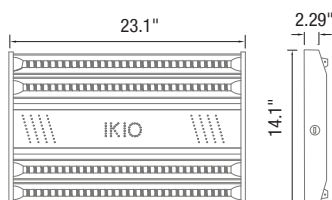


DesignLights Consortium® (DLC) Premium qualified product. Not all versions of this product may be DLC qualified. Please check the DLC Qualified Products List at www.designlights.org/QPL to confirm which versions are qualified.

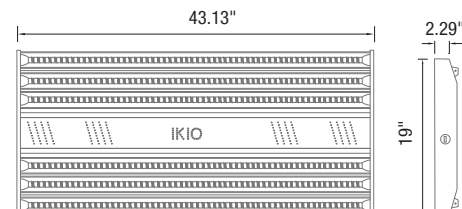
*Specifications, Warranty, and Qualifications can vary per item/SKU. See technical data sheets (TDS) for specific information.

Dimensions (Inches)

60 W - 100 W	
Length	23.1"
Width	2.29"
Height	14.1"



200 W	
Length	43.13"
Width	2.29"
Height	19"





Superia

UFO High Bay

Electrical

Power	100 W 120 W 150 W 200 W
Voltage	100-277 V
Power Factor	0.937

Lighting Performance

Lumens	18000 lm 21600 lm 27000 lm 36000 lm
Efficacy	180 lm/W
Color Temperature (CCT)	3000 K 4000 K 5000 K 5700 K 6500 K
Color Rendering (CRI)	80+
Beam Angle	120°
Light Distribution	Type VS
Dimmable Lighting Control	0-10 V, Range 10% - 100%

Environment

Operating Temperature	-10 °F ~ +120 °F
Suitable Location	WET
Ingress Protection Rating (IP)	IP65

Lifespan

Average Life (Hours)	100,000
Warranty (Years)	10

Dimensions (Inches)

	100 W - 120 W	150 W - 200 W
Height	1.96"	2.16"
Diameter	Ø 10.23"	Ø 11.61"
Total Height	5.51"	5.98"

Components

LED Light Source	Samsung
Driver	Lifud

Construction

Housing	Aluminum
Cover	Tempered Glass
Base / Power Supply	Hard Wire
Finish	Black
Diffuser	Clear

Application Areas

Ideal for retrofitting inefficient fixtures in malls, hospitals, airports, offices, lobbies and other residential and commercial applications.

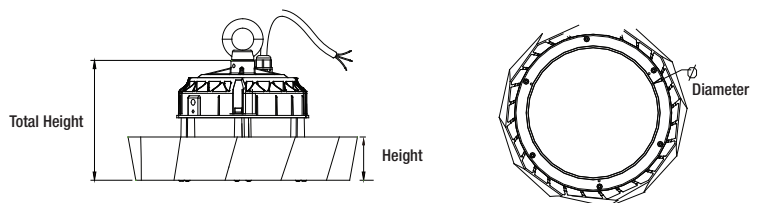
Qualifications and Certifications

Qualified Part Number	IK-HBUF-L180
-----------------------	---------------------



DesignLights Consortium® (DLC) Premium qualified product. Not all versions of this product may be DLC qualified. Please check the DLC Qualified Products List at www.designlights.org/QPL to confirm which versions are qualified.

*Specifications, Warranty, and Qualifications can vary per item/SKU. See technical data sheets (TDS) for specific information.





Rodella

UFO High Bay

Electrical

Power	100 W 150 W 200 W 240 W
Voltage	100-277 V
Power Factor	0.9956

Lighting Performance

Lumens	14000 lm 21000 lm 28000 lm 33600 lm
Efficacy	140 lm/W
Color Temperature (CCT)	3500 K 4000 K 5000 K
Color Rendering (CRI)	70+
Beam Angle	120°
Light Distribution	Type VS
Dimmable Lighting Control	0-10 V, Range 10% - 100%

Environment

Operating Temperature	-10 °F ~ +120 °F
Suitable Location	WET
Ingress Protection Rating (IP)	IP65

Lifespan

Average Life (Hours)	100,000
Warranty (Years)	10

Dimensions (Inches)

	100 W - 150 W	200 W	240 W
Length	N/A	N/A	N/A
Diameter	Ø11.6	Ø 11.85"	Ø 12.6"
Height	5.9"	6.4"	6.3"

Components

LED Light Source	Lumiled 3030
Driver	Meanwell

Construction

Housing	Aluminum
Cover	Tempered Glass
Base / Power Supply	Hard Wired
Finish	Black
Diffuser	Clear

Application Areas

Ideal for retrofitting inefficient fixtures in malls, hospitals, airports, offices, lobbies and other residential and commercial applications.

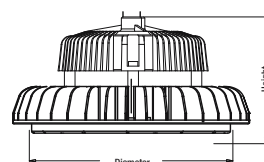
Qualifications and Certifications

Qualified Part Number	IK-HBP2
-----------------------	----------------



DesignLights Consortium® (DLC) Premium qualified product. Not all versions of this product may be DLC qualified. Please check the DLC Qualified Products List at www.designlights.org/QPL to confirm which versions are qualified.

*Specifications, Warranty, and Qualifications can vary per item/SKU. See technical data sheets (TDS) for specific information.





Halo

UFO High Bay

Electrical

Power	100 W 150 W 200 W 240 W
Voltage	100-277 V (Also available in 277-480 V)
Power Factor	0.93

Lighting Performance

Lumens	17000 lm 25500 lm 34000 lm 40800 lm
Efficacy	170 lm/W
Color Temperature (CCT)	4000 K 5000 K
Color Rendering (CRI)	70+
Beam Angle	120°
Dimmable Lighting Control	0-10 V, Range 10% - 100%

Environment

Operating Temperature	-22 °F~ +122 °F
Suitable Location	WET
Ingress Protection (IP)	IP65

Lifespan

Average Life (Hours)	50,000
Warranty (Years)	5

Components

LED Light Source	Lumiled
Driver	Lifud

Construction

Housing	Aluminum
Cover	Glass
Finish	Black

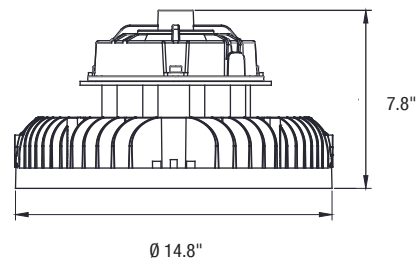
Application Areas

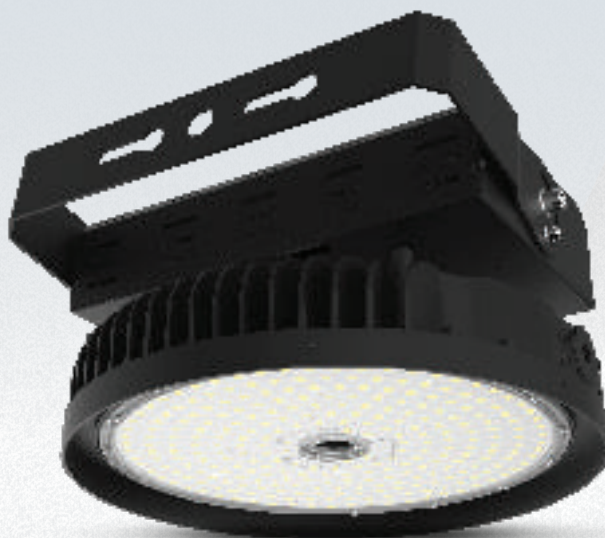
Sports Arenas, Airports, Warehouses, Gymnasiums, Courtyards Plazas, Public Areas.

*Specifications, Warranty, and Qualifications can vary per item/SKU. See technical data sheets (TDS) for specific information.

Dimensions (Inches)

Height	7.8"
Diameter	Ø 14.8"





Halo Pro

UFO High Bay

Electrical

Power	300 W 400 W 500 W 600 W
Voltage	100-277 V (Also available in 277-480 V)
Power Factor	0.93

Lighting Performance

Lumens	51000 lm 68000 lm 85000 lm 102000 lm
Efficacy	170 lm/W
Color Temperature (CCT)	4000 K 5000 K
Color Rendering (CRI)	70+
Beam Angle	120°
Dimmable Lighting Control	0-10 V, Range 10% - 100%

Environment

Operating Temperature	-22 °F~ +122 °F
Suitable Location	WET
Ingress Protection (IP)	IP65

Lifespan

Average Life (Hours)	50,000
Warranty (Years)	5

Components

LED Light Source	Lumiled
Driver	Lifud

Construction

Housing	Aluminum
Cover	Glass
Finish	Black

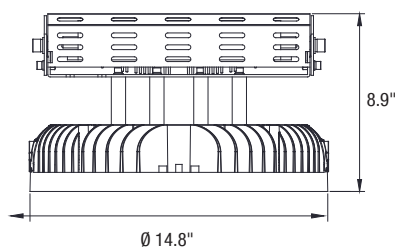
Application Areas

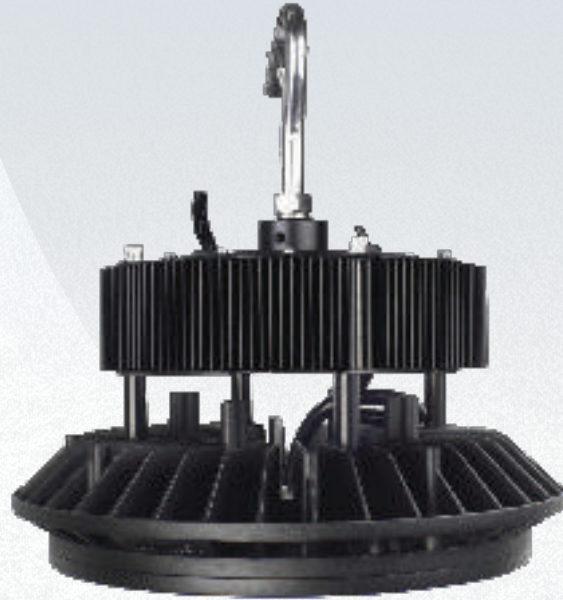
Sports Arenas, Airports, Warehouses, Gymnasiums, Courtyards Plazas, Public Areas.

*Specifications, Warranty, and Qualifications can vary per item/SKU. See technical data sheets (TDS) for specific information.

Dimensions (Inches)

Height	8.9"
Diameter	Ø 14.8"





Operates Effectively in Temperatures — UP TO — **149 °F**

Orbix

UFO High Bay

Electrical

Power	220 W
Voltage	120-277 V (Also available in 277-480 V)

Lighting Performance

Lumens	36300 lm
Efficacy	165 lm/W
Color Temperature (CCT)	5000 K
Color Rendering (CRI)	>80
Beam Angle	120°

Environment

Operating Temperature	-40 °F ~ +149 °F
Suitable Location	WET
Ingress Protection Rating (IP)	IP65

Lifespan

Average Life (Hours)	50,000
Warranty (Years)	5

Components

Driver	Moons
--------	-------

Construction

Housing	Aluminum
Finish	Black

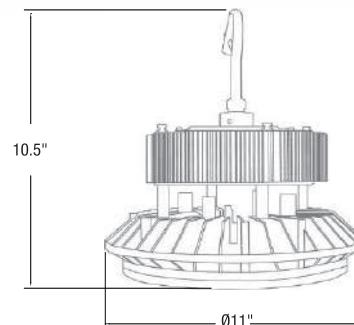
Application Areas

Sports Arenas, Airports, Warehouses, Gymnasiums, Courtyards, Public Areas.

*Specifications, Warranty, and Qualifications can vary per item/SKU. See technical data sheets (TDS) for specific information.

Dimensions (Inches)

Height	10.5"
Diameter	Ø11"



| Flood Lights

Stadium Flood Lights

Architectural Flood Lights



DYNAMO3

STADIUM FLOOD LIGHT



Electrical

Power	300 W 400 W 500 W 600 W
Voltage	100-277 V (also available with 240 - 480 V input)
Power Factor	≥ 0.90

Lighting Performance

Lumens	45000 lm 60000 lm 75000 lm 90000 lm
Efficacy	150 lm/W
Color Temperature (CCT)	3000 K 4000 K 5000 K
Color Rendering (CRI)	70+
Beam Angle	30°
BUG Rating (Backlight, Uplight, and Glare)	B5 - U1 - G1
Dimmable Lighting Control	0-10 V Dimmable

Environment

Operating Temperature	-22 °F ~ +122 °F
Suitable Location	WET
Ingress Protection Rating (IP)	IP66

Lifespan

Average Life (Hours)	100,000
Warranty (Years)	10

Dimensions (Inches)

Height (With Bracket)	19.68"
Diameter	Ø15.94"
Width	16.33"

Components

LED Light Source	Luxeon 5050
Driver	Inventronics

Construction

Housing	Die Cast Aluminum
Lens	Polycarbonate
Base / Power Supply	Hard Wire
Finish	Black

Application Areas

Arenas, Gymnasiums, Plazas, Airports, Courtyards, Stadiums.

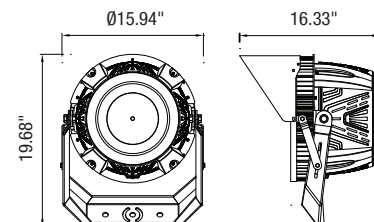
Qualifications and Certifications

Qualified Part Number	IK-SLEL2 (Only 500 W is DLC listed)
-----------------------	-------------------------------------



DesignLights Consortium® (DLC) Premium qualified product. Not all versions of this product may be DLC qualified. Please check the DLC Qualified Products List at www.designlights.org/QPL to confirm which versions are qualified.

*Specifications, Warranty, and Qualifications can vary per item/SKU. See technical data sheets (TDS) for specific information.





CHROMIX

RGBW STADIUM FLOOD LIGHT



Electrical

Power	300 W 400 W 500 W 600 W
Voltage	100-277 V (Also available with 240 - 480 V input)
Power Factor	≥ 0.90

Lighting Performance

Color	Red Green Blue White
Color Rendering (CRI)	70+
Beam Angle	30°
BUG Rating (Backlight, Uplight, and Glare)	B5 - U1 - G1
Dimmable Lighting Control	0-10 V Dimmable

Environment

Operating Temperature	-22 °F ~ +122 °F
Suitable Location	WET
Ingress Protection Rating (IP)	IP66

Lifespan

Average Life (Hours)	100,000
Warranty (Years)	10

Components

LED Light Source	Luxeon 5050
Driver	Inventronics

Construction

Housing	Die Cast Aluminum
Lens	Polycarbonate
Base / Power Supply	Hard Wire
Finish	Black

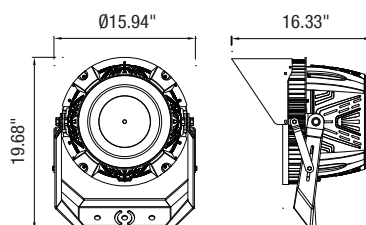
Application Areas

Arenas, Gymnasiums, Plazas, Airports, Courtyards, Stadiums.

*Specifications, Warranty, and Qualifications can vary per item/SKU. See technical data sheets (TDS) for specific information.

Dimensions (Inches)

Height (With Bracket)	19.68"
Diameter	Ø15.94"
Width	16.33"





DYNAMO3PRO

STADIUM FLOOD LIGHT



Electrical

Power	750 W 1000 W 1200 W
Voltage	100-277 V (also available with 240 - 480 V input)
Power Factor	0.95

Lighting Performance

Lumens	120000 lm 160000 lm 200000 lm
Efficacy	160 lm/W
Color Temperature (CCT)	5000 K
Color Rendering (CRI)	90
Beam Angle	30°
Dimmable Lighting Control	Continuous Dimming to 10% or below

Environment

Operating Temperature	-40 °F ~ +122 °F
Suitable Location	WET
Ingress Protection Rating (IP)	IP66

Lifespan

Average Life (Hours)	100,000
Warranty (Years)	10

Components

LED Light Source	Luxeon 5050
Driver	Inventronics / Meanwell

Construction

Housing	Cold Forging Aluminum
Lens	Anti-UV PC Optical Material
Finish	Black

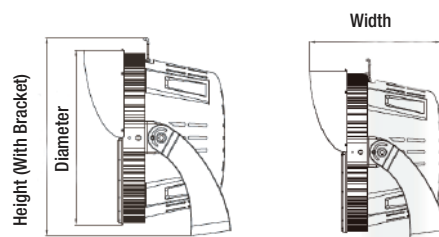
Application Areas

Sports Facilities, Stadiums, Container Loading Areas, Shipping Yards, Airports, Ports.

*Specifications, Warranty, and Qualifications can vary per item/SKU. See technical data sheets (TDS) for specific information.

Dimensions (Inches)

	750 W 1000W	1250 W
Height (With Bracket)	22.4"	28.89"
Diameter	Ø18.2"	Ø25.4"
Width	14.9"	20.5"





CAPELLA

STADIUM FLOOD LIGHT



Electrical

Power	250 W 500 W 750 W 1000 W 1250 W
Voltage	100-277 V
Power Factor	≥ 0.95

Lighting Performance

Lumens	32500 lm 75000 lm 112500 lm 150000 lm 187500 lm
Efficacy	130 lm/W
Color Temperature (CCT)	5000 K
Color Rendering (CRI)	74.4
Beam Angle	30°
Dimmable Lighting Control	Non Dimmable

Environment

Operating Temperature	-22 °F ~ +122 °F
Suitable Location	WET
Ingress Protection Rating (IP)	IP66

Lifespan

Average Life (Hours)	100,000
Warranty (Years)	10

Components

LED Light Source	Lumileds
Driver	Meanwell

Construction

Housing	Die-cast aluminum
Lens	PC
Base / Power Supply	Hard Wire
Finish	Black

Application Areas

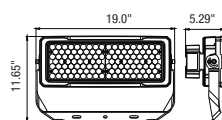
Arenas, Gymnasiums, Plazas, Airports, Courtyards, Stadiums.

*Specifications, Warranty, and Qualifications can vary per item/SKU. See technical data sheets (TDS) for specific information.

Dimensions (Inches)

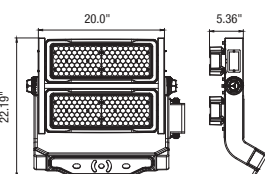
250 W

Length	11.65"
Height	5.29"
Width	19.0"



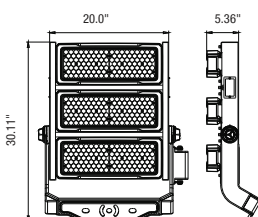
500 W

Length	20.0"
Height	5.36"
Width	22.19"



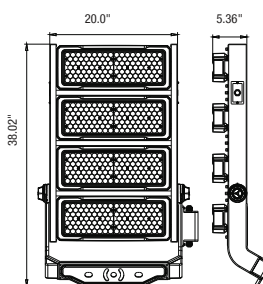
750 W

Length	30.11"
Height	5.36"
Width	20.07"



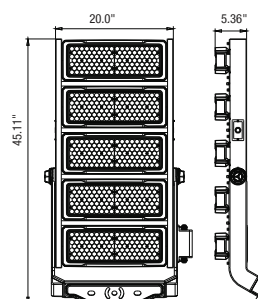
1000 W

Length	38.02"
Height	5.36"
Width	20.07"



1250 W

Length	45.11"
Height	5.36"
Width	20.07"





NOVUS

ARCHITECTURAL FLOOD LIGHT



Electrical

Power	15 W-30 W-55 W
Voltage	120-277 V, AC
Power Factor	≥ 0.95

Lighting Performance

Lumens	1950 lm- 3900 lm-7150 lm
Efficacy	130 lm/W
Color Temperature (CCT)	3000 K-4000 K-5000 K
Color Rendering (CRI)	>70
Beam Angle	30°
Light Distribution	NA
Dimmable Lighting Control	0-10 V Dimmable

Environment

Operating Temperature	-22 °F ~ +113 °F
Suitable Location	WET
Ingress Protection (IP)	IP66
Impact Protection Rating (IK)	IK08

Dimensions (Inches)

Length	8.97"
Height	7.94"
Width	4.52"
Depth	3.49"

Lifespan

Average Life (Hours)	50,000
Warranty (Years)	5

Components

LED Light Source	SMD LED
Driver	Becky

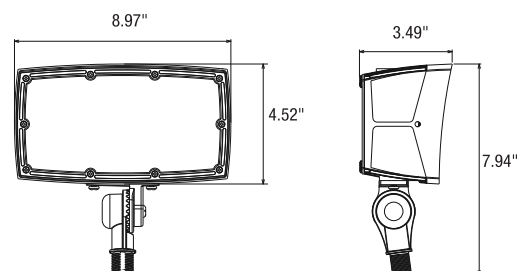
Construction

Housing	Die-Cast Aluminum
Cover Material / Lens	UV Stabilized Polycarbonate
Finish	Bronze

Application Areas

Wall Washing, Landscaping Lighting, Outdoor Advertising And Square Nocturnes.

*Specifications, Warranty, and Qualifications can vary per item/SKU. See technical data sheets (TDS) for specific information.



| Canopy Lights

Fuel Pump Canopy Light

Parking Garage Canopy Light



Delphi

Fuel Pump Canopy Light | CCT & Power Selectable

Electrical

Power	30 W-40 W-50 W
Voltage	120-277 V
Power Factor	0.957

Lighting Performance

Lumens	3900 lm-5200 lm-6500 lm
Efficacy	130 lm/W
Color Temperature (CCT)	3000 K-4000 K-5000 K
Color Rendering (CRI)	80+
Beam Angle	110°
Dimmable Lighting Control	0-10 V

Environment

Operating Temperature	-40 °F ~ +122 °F
Suitable Location	WET
Ingress Protection Rating (IP)	IP66

Lifespan

Average Life (Hours)	50,000
Warranty (Years)	5

Components

LED Light Source	Lumiled 2835
Driver	Becky

Construction

Housing	Aluminum
Lens	PC
Finish	Bronze

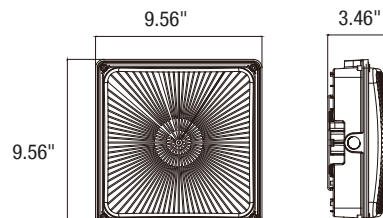
Application Areas

Gas Stations, Commercial Spaces, Parking Lots, Other Industrial Spaces, Warehouses, Hospitals

*Specifications, Warranty, and Qualifications can vary per item/SKU. See technical data sheets (TDS) for specific information.

Dimensions (Inches)

Length	9.56"
Height	3.46"
Width	9.56"





Ortega

Fuel Pump Canopy Light

Electrical

Power	75 W 100 W 130 W 150 W
Voltage	120-277 V
Power Factor	≥0.90

Lighting Performance

Lumens	9750 lm 13000 lm 16900 lm 19500 lm
Efficacy	130 lm/W
Color Temperature (CCT)	5000 K
Color Rendering (CRI)	84.4
Beam Angle	110°
Dimmable Lighting Control	Continuous Dimming to 10% or Below

Environment

Operating Temperature	-13 °F ~ +104 °F
Suitable Location	WET
Ingress Protection Rating (IP)	IP66

Dimensions (Inches)

Length	15.11"
Height	2.75"
Width	15.11"

Lifespan

Average Life (Hours)	100,000
Warranty (Years)	10

Components

LED Light Source	Lumiled 3030
Driver	Meanwell HLG

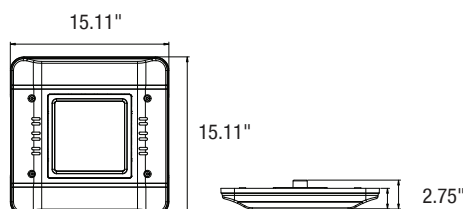
Construction

Housing	Aluminum and Polycarbonate
Base / Power Supply	Hard Wire
Finish	White

Application Areas

Commercial Spaces, Parking Lots, Gas Stations, Other Industrial Spaces

*Specifications, Warranty, and Qualifications can vary per item/SKU. See technical data sheets (TDS) for specific information.





Parko

Parking Garage Canopy Light

Electrical

Power	40 W 60 W
Voltage	120-277 V
Power Factor	0.91

Lighting Performance

Lumens	5200 lm 7800 lm
Efficacy	130 lm/W
Color Temperature (CCT)	5000 K
Color Rendering (CRI)	84.4
Beam Angle	120°
Dimmable Lighting Control	Continuous Dimming to 10% or Below

Environment

Operating Temperature	-13 °F ~ +104 °F
Suitable Location	WET
Ingress Protection Rating (IP)	IP66

Lifespan

Average Life (Hours)	100,000
Warranty (Years)	10

Dimensions (Inches)

Length	4.48"
Height	10.36"
Diameter	Ø11.14"

Components

LED Light Source	Lumiled 3030
Driver	Meanwell HLG

Construction

Housing	Aluminum and Polycarbonate
Base / Power Supply	Hard Wire / Surge Protector
Finish	White

Application Areas

Garages, Gas Stations, Parking Lots, Walkways

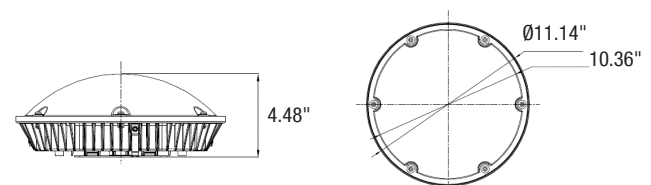
Qualifications and Certifications

Qualified Part Number	IK-CPBO-L130
-----------------------	---------------------



DesignLights Consortium® (DLC) Premium qualified product. Not all versions of this product may be DLC qualified. Please check the DLC Qualified Products List at www.designlights.org/QPL to confirm which versions are qualified.

*Specifications, Warranty, and Qualifications can vary per item/SKU. See technical data sheets (TDS) for specific information.





| High Mast Lights



Hexacule

High Mast Light

Electrical

Power	240 W 320 W 475 W 575 W 750 W
Voltage	120-277 V
Power Factor	0.91

Lighting Performance

Lumens	33600 lm 44800 lm 66500 lm 80500 lm 105000 lm
Efficacy	140 lm/W
Color Temperature (CCT)	4000 K 5000 K
Color Rendering (CRI)	80+
Beam Angle	240°
Dimmable Lighting Control	Continuous Dimming to 10% or Below (0-10 V)

Environment

Operating Temperature	-40 °F ~ +122 °F
Suitable Location	WET
Ingress Protection (IP)	IP66
Impact Protection (IK)	IK08

Dimensions (Inches)

Length	29.23"
Height	12.56"
Diameter	Ø21.6"
Base Width	15.28"

Lifespan

Average Life (Hours)	100,000
Warranty (Years)	10

Components

LED Light Source	Osram
Driver	Meanwell HLG

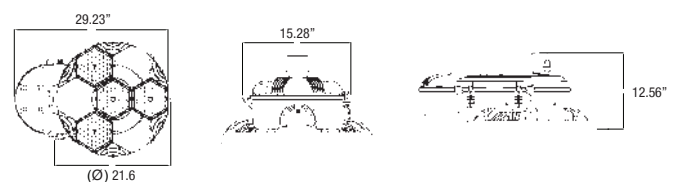
Construction

Housing	Die-cast Aluminum
Lens	Polycarbonate
Base / Power Supply	Hard Wire
Finish	Gray

Application Areas

High activity areas such as merging expressways, roadways, airports, heavy-industry zones, shipping ports.

*Specifications, Warranty, and Qualifications can vary per item/SKU. See technical data sheets (TDS) for specific information.





| Area
Luminaires



Locus

Area Luminaires

Electrical

Power	100 W 150 W 200 W 240 W 300 W
Voltage	AC 100-277 V 50/60 Hz (Also available with 240 - 480 V input)
Power Factor	0.99

Lighting Performance

Lumens	14000 lm 21000 lm 28000 lm 33600 lm 42000 lm
Efficacy	140 lm/W
Color Temperature (CCT)	4000 K 5000 K
Color Rendering (CRI)	70+
Beam Angle	T3 M T5 M
Light Distribution	Type IV, Short
BUG Rating (Backlight, Uplight, and Glare)	B3 - U0 - G3
Dimmable Lighting Control	0-10 V, Range 10% - 100%

Environment

Operating Temperature	-40 °F ~ +131 °F
Suitable Location	WET
Ingress Protection Rating (IP)	IP66
Impact Protection (IK)	IK10

Lifespan

Average Life (Hours)	100,000
Warranty (Years)	10

Dimensions (Inches)

100 W - 150 W	16.80"	11.88"	3.36"
Length	16.8"		
Width	11.88"		
Height	3.36"		

100 W - 150 W	23.40"	11.88"	3.36"	3.60"
Length	23.4"			
Width	11.88"			
Height	3.6"			

Components

LED Light Source	Lumiled 3030
Driver	Meanwell HLG

Construction

Housing	Aluminum
Lens	Polycarbonate
Base / Power Supply	Hard Wire / Surge Protector
Finish	Bronze White

Application Areas

Parking lot, street and building perimeter lighting. Can also be used as a flood or area light.

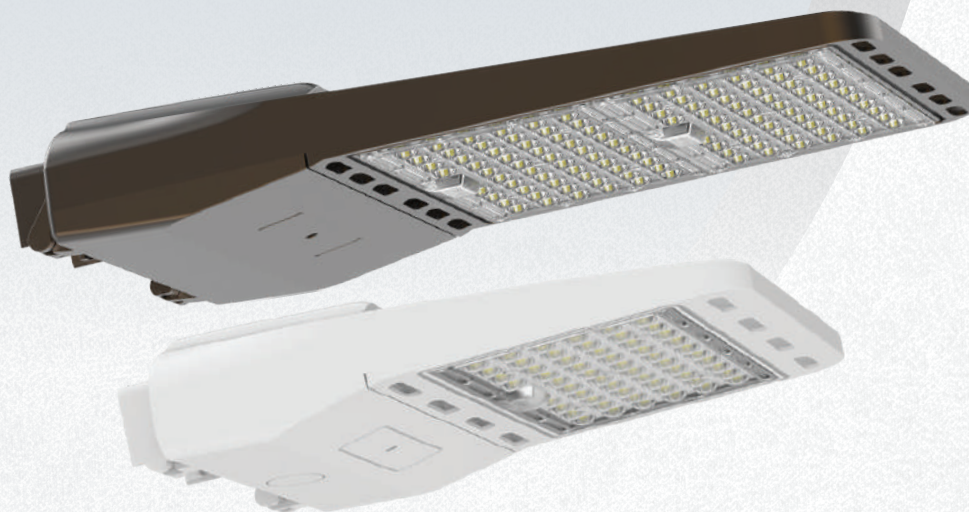
Qualifications and Certifications

Qualified Part Number	IK-SBSL1
-----------------------	-----------------



DesignLights Consortium® (DLC) Premium qualified product. Not all versions of this product may be DLC qualified. Please check the DLC Qualified Products List at www.designlights.org/QPL to confirm which versions are qualified.

*Specifications, Warranty, and Qualifications can vary per item/SKU. See technical data sheets (TDS) for specific information.



Amparo

Area Luminaires

Electrical

Power	100 W 150 W 190 W 300 W 400 W
Voltage	AC 100-277 V 50/60 Hz (Also available with 240 - 480 V input)
Power Factor	0.926

Lighting Performance

Lumens	14000 lm 21000 lm 26600 lm 42000 lm 56000 lm
Efficacy	140 lm/W
Color Temperature (CCT)	4000 K 5000 K
Color Rendering (CRI)	80+
Light Distribution	Type III M Type V M
BUG Rating (Backlight, Uplight, and Glare)	B3 - U0 - G3
Dimmable Lighting Control	0-10 V, Range 10% - 100%

Environment

Operating Temperature	-40 °F ~ +131 °F
Suitable Location	WET
Ingress Protection Rating (IP)	IP66
Impact Protection (IK)	IK10

Lifespan

Average Life (Hours)	100,000
Warranty (Years)	10

Dimensions (Inches)

	100 W, 150 W, 190 W	300 W	400 W
Length	18"	24"	30.12"
Width	14"	14"	13.39"
Height	7"	7"	7"

Components

LED Light Source	Lumiled 3030
Driver	Meanwell HLG

Construction

Housing	Aluminum
Lens	Polycarbonate
Base / Power Supply	Hard Wire / Surge Protector
Finish	Bronze White

Application Areas

Parking lot, street and building perimeter lighting. Can also be used as a flood or area light.

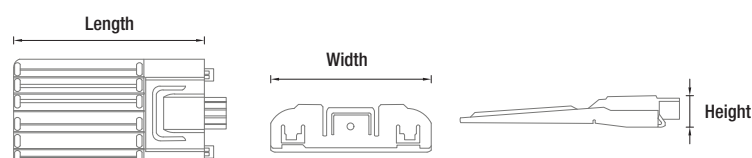
Qualifications and Certifications

Qualified Part Number	IK-SBSL2
-----------------------	-----------------



DesignLights Consortium® (DLC) Premium qualified product. Not all versions of this product may be DLC qualified. Please check the DLC Qualified Products List at www.designlights.org/QPL to confirm which versions are qualified.

*Specifications, Warranty, and Qualifications can vary per item/SKU. See technical data sheets (TDS) for specific information.



| Street Lights



Robus

Cobra Head Street Light

Electrical

Power	100 W 200 W
Voltage	100-277 V
Power Factor	0.93

Lighting Performance

Lumens	14500 lm 29000 lm
Efficacy	145 lm/W
Color Temperature (CCT)	3000 K
Color Rendering (CRI)	≥70
Beam Angle	120°
Light Distribution	Type IV Distribution, Short
BUG Rating (Backlight, Uplight, and Glare)	B3 - U0 - G3
Dimmable Lighting Control	0-10 Dimming

Environment

Operating Temperature	-22 °F ~ +113°F
Suitable Location	WET
Ingress Protection Rating (IP)	IP66
Impact Protection (IK)	IK09

Lifespan

Average Life (Hours)	63,000
Warranty (Years)	7

Components

LED Light Source	Lumiled 3030
Driver	Meanwell HLG

Construction

Housing	Aluminum
Cover Material / Lens	PC
Diffuser	Clear
Base / Power Supply	Hard Wire - 3 Cord Cable
Finish	Light Silver
Wind Shear Rating	35 m/s

Application Areas

Street Lighting, Outdoor Parking Areas, Public Entrances, Highways, Bridges, Sports Yards

*Specifications, Warranty, and Qualifications can vary per item/SKU. See technical data sheets (TDS) for specific information.

Dimensions (Inches)

100 W		23.33"		11.62"		6.70"	
Length	23.33"						
Width	6.70"						
Height	11.62"						

100 W		27.28"		11.96"		5.69"	
Length	27.28"						
Width	5.69"						
Height	11.96"						

| Wall Packs

Wall Pack - Directional

Wall Pack - Semi Cutoff

Wall Pack - Full Cutoff



Delphi Mini Wall Pack

Directional



Electrical

Power	15 W-20 W-25 W
Voltage	120-277 V
Power Factor	>0.9

Lighting Performance

Lumens	1800 lm-2400 lm-3000 lm
Efficacy	120 lm/W
Color Temperature (CCT)	3000 K-4000 K-5000 K
Color Rendering (CRI)	>80
Beam Angle	112.3°
Dimmable Lighting Control	0-10 V Dimming

Environment

Operating Temperature	-40 °F ~ +125 °F
Suitable Location	WET
Ingress Protection Rating (IP)	IP65

Dimensions (Inches)

Length	5.9"
Width	2.5"
Height	8.7"

Lifespan

Average Life (Hours)	50,000
Warranty (Years)	5 (+5 Years Extended Warranty Option Available)

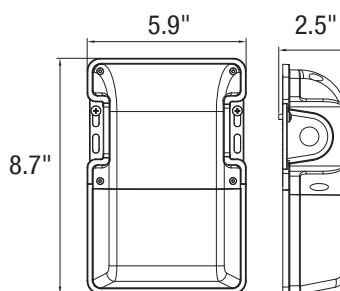
Construction

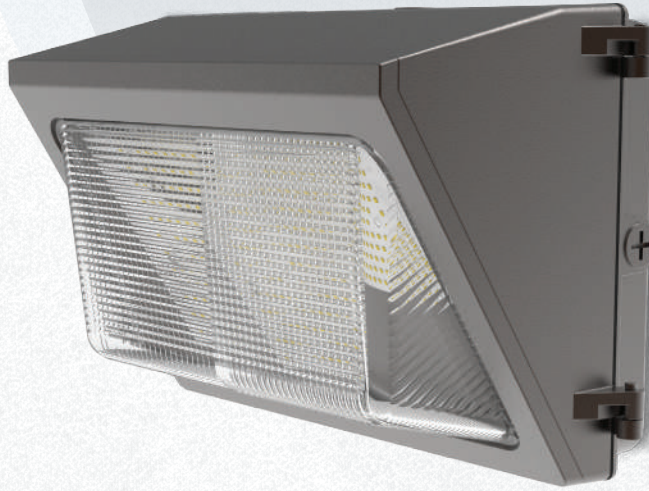
Housing	Aluminum
Cover Material / Lens	Polycarbonate
Finish	Bronze

Application Areas

Security Areas, Entryways, Walkways, Stairways, Perimeter Lighting, Building Exteriors

*Specifications, Warranty, and Qualifications can vary per item/SKU. See technical data sheets (TDS) for specific information.





Delphi Wall Pack

Semi Cutoff



Electrical

Power	(Variant 1) 30 W-42 W-50 W (Variant 2) 75 W-100 W-120 W
Voltage	120-277 V
Power Factor	0.96

Lighting Performance

Lumens	(Variant 1) 3935.1 lm-5509.14 lm-6558.5 lm (Variant 2) 9489 lm-12652 lm-15182.4 lm
Efficacy	131.17 lm/W - 126.52 lm/W
Color Temperature (CCT)	3000 K-4000 K-5000 K
Color Rendering (CRI)	70
Beam Angle	360°
Dimmable Lighting Control	0-10 V Dimming

Environment

Operating Temperature	-13 °F ~ +125 °F
Suitable Location	WET
Ingress Protection Rating (IP)	IP65

Lifespan

Average Life (Hours)	100,000
Warranty (Years)	10

Dimensions (Inches)

Length	14.25"
Width	7.56"
Height	9.36"

Construction

Housing	Die Cast Aluminum
Diffuser	Glass
Base / Power Supply	Hard Wire
Finish	Bronze

Application Areas

Building facades, commercial spaces, industrial areas, retail & hospitality buildings that demand long service life and low maintenance.

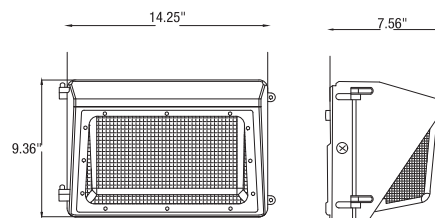
Qualifications and Certifications

Qualified Part Number	IK-WPBO3M
-----------------------	------------------



DesignLights Consortium® (DLC) Premium qualified product. Not all versions of this product may be DLC qualified. Please check the DLC Qualified Products List at www.designlights.org/QPL to confirm which versions are qualified.

*Specifications, Warranty, and Qualifications can vary per item/SKU. See technical data sheets (TDS) for specific information.





Delphi Wall Pack

Full Cutoff



Electrical

Power	40 W-60 W-80 W-100 W
Voltage	120-347 V
Power Factor	0.967

Lighting Performance

Lumens	5600 lm-8400 lm-11200 lm-14000 lm
Efficacy	123.21 lm/W
Color Temperature (CCT)	3000 K-4000 K-5000 K
Color Rendering (CRI)	72.8
Beam Angle	0-90°
Dimmable Lighting Control	0-10 V Dimming

Environment

Operating Temperature	-20 °F ~ +140 °F
Suitable Location	WET
Ingress Protection Rating (IP)	IP65

Lifespan

Average Life (Hours)	100,000
Warranty (Years)	10

Dimensions (Inches)

Length	11.04"
Height	7.22"
Width	9.21"

Construction

Housing	Die Cast Aluminum
Lens	Clear
Base / Power Supply	Hard Wired
Finish	Black / Bronze Customize (Optional)

Application Areas

Building facades, commercial spaces, industrial areas, retail & hospitality buildings that demand long service life and low maintenance.

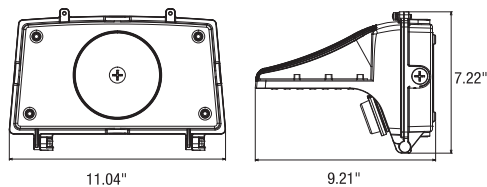
Qualifications and Certifications

Qualified Part Number	IK-WP10
-----------------------	----------------



DesignLights Consortium® (DLC) Premium qualified product. Not all versions of this product may be DLC qualified. Please check the DLC Qualified Products List at www.designlights.org/QPL to confirm which versions are qualified.

*Specifications, Warranty, and Qualifications can vary per item/SKU. See technical data sheets (TDS) for specific information.



| Hazardous Location Lights

High Bays

Low Bays

Linear Lights

Area Lights

Drop Lights

Exit Lights



FORZA

UFO High Bay

Ratings & Certificates

Rating (UL844)

Class I, Division 2, Groups A, B, C, D
Class II, Division 1, Groups E, F, G
Class II, Division 2, Groups F, G
Class III

Rating (ATEX)

II 3 G Ex ec IIC T3C Gc
II 2 D Ex op is tb IIIC T160°C Db
EX IIC EX mb eb IIC T3C GB
II2 EX op is tb IIC T3C DB

Rating (IECEX)

Ex ec IIB T3C Gc
Ex op is tb IIIC T160°C Db
EX mb eb IIC T3C Gb
EX op is tb IIC T3C Db

Marine Rating

UL 1598, UL 1598A ABS

Electrical

Power	20 W 40 W 60 W 80 W 100 W 150 W 180 W 200 W 250 W 300 W
Voltage	100-277 V

Lighting Performance

Lumens	2800 lm 5600 lm 8400 lm 11200 lm 14000 lm 21000 lm 25200 lm 28000 lm 35000 lm 42000 lm
Efficacy	140 lm/W
Color Temperature (CCT)	4000 K 5000 K
Color Rendering (CRI)	80
Beam Angle	40° 60° 90° 120°
Dimmable Lighting Control	0-10 V Dimming

Lifespan

Average Life (Hours)	50,000
Warranty (Years)	5

Application Areas

- | Oil and gas industry
- | Chemical industry
- | Marine and aerospace field
- | Metal treatment
- | Food and alcohol industry

Environment

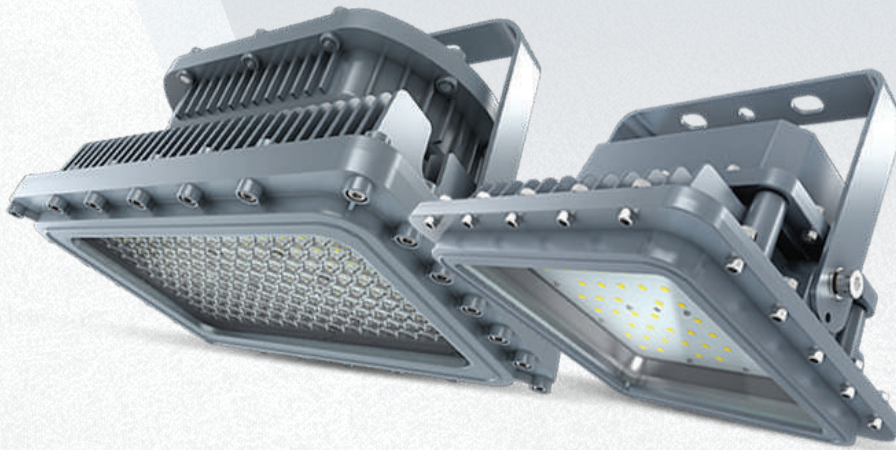
Operating Temperature	-40 °F ~ +131°F
Suitable Location	DUSTY & WET
Ingress Protection (IP)	IP66
Impact Protection (IK)	IK08

Construction

Housing	Aluminum
Cover Material / Lens	Toughened Glass
Finish	Grey



*Specifications, Warranty, and Qualifications can vary per item/SKU. See technical data sheets (TDS) for specific information.



DOMINUS

UFO High Bay

Ratings & Certificates

Rating (UL844)

Class I, Div. 1, Groups C, D
 Class I, Div. 2, Groups A, B, C, D
 Class II, Div. 1, Groups E, F, G
 Class II, Div. 2, Groups F, G
 Class III

Marine Rating

UL 1598, ABS

Application Areas

- | Oil and gas industry
- | Chemical industry
- | Ocean
- | Marine and aerospace field
- | Metal treatment
- | Food and alcohol industry

Electrical

Power	20 W 40 W 60 W 80 W 100 W 150 W 200 W
Voltage	100-277 V

Lighting Performance

Lumens	2800 lm 5600 lm 8400 lm 11200 lm 14000 lm 21000 lm 28000 lm
Efficacy	140 lm/W
Color Temperature (cct)	4000 K 5000 K
Color Rendering (CRI)	80
Beam Angle	40° 60° 90° 120°
Dimmable Lighting Control	0-10 V Dimming

Lifespan

Average Life (Hours)	50,000
Warranty (Years)	5

Environment

Operating Temperature	-40 °F ~ +131°F
Suitable Location	DUSTY & WET
Ingress Protection (IP)	IP66
Impact Protection (IK)	IK10

Construction

Housing	Aluminum
Cover Material / Lens	Toughened Glass
Base / Power Supply	Three connection cable entry points.
Finish	Grey



*Specifications, Warranty, and Qualifications can vary per item/SKU. See technical data sheets (TDS) for specific information.



VIGOR

UFO High Bay

Ratings & Certificates

Rating (UL844)

Class I, Division 2, Groups A, B, C, D
Class II, Division 1, Groups E, F, G
Class II, Division 2, Groups F, G
Class III

Rating (ATEX)

Ile3 cG tEixo enc IIC T3C Gc
II2 Ex tb IIIC T135°C Db IP66
EX IIC EX mb eb IIC T4 GB
II2 EX op is tb IIC T4 DB

Rating (IECEX)

Ex ec IIC T3C Gc
Ex tb IIIC T135°C Db IP66
EX mb eb IIC T4 Gb
EX op is tb IIC T4 Db

Marine Rating

UL1598, UL1598A, ABS

Electrical

Power	20 W 40 W 60 W 80 W 100 W 120 W 150 W 200 W 250 W 300 W 350 W 400 W
Voltage	100-277 V

Lighting Performance

Lumens	2800 lm 5600 lm 8400 lm 11200 lm 14000 lm 16800 lm 28000 lm 35000 lm 42000 lm 49000 lm 56000 lm
Efficacy	140 lm/W
Color Temperature (CCT)	4000 K 5000 K
Color Rendering (CRI)	80
Beam Angle	40° 60° 90° 120°
Dimmable Lighting Control	0-10 V Dimming

Lifespan

Average Life (Hours)	50,000
Warranty (Years)	5

Application Areas

- | Oil and gas industry
- | Chemical industry
- | Marine and aerospace field
- | Metal treatment
- | Food and alcohol industry

Environment

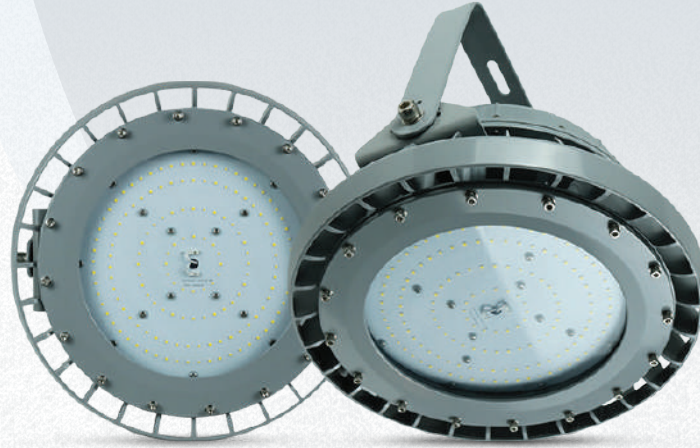
Operating Temperature	-40 °F ~ +131 °F
Suitable Location	DUSTY & WET
Ingress Protection (IP)	IP66
Impact Protection (IK)	IK08

Construction

Housing	Aluminum
Cover Material / Lens	Toughened Glass
Base / Power Supply	Three connection cable entry points
Finish	Grey



*Specifications, Warranty, and Qualifications can vary per item/SKU. See technical data sheets (TDS) for specific information.



EXOPLUS

UFO High Bay

Ratings & Certificates

Rating (UL844)

Class I, Division 1, Groups C, D
 Class I, Division 2, Groups A, B, C, D
 Class II, Division 1, Groups E, F, G
 Class II, Division 2, Groups F, G
 Class III

Marine Rating

UL 1598A ABS

Rating (ATEX)

II2 G Ex db op is IIB T5/T6 Gb
 II2 D Ex op is tb IIIC T80/90C Db IP66

Rating (IECEx)

Ex db op is IIB T5/T6 Gb
 Model C2 Ex op is tb IIIC T80/90C Db IP66

Application Areas

- | Oil and gas industry
- | Chemical industry
- | Marine and aerospace field
- | Metal treatment
- | Food and alcohol industry

Electrical

Power	20 W 60 W 80 W 100 W 150 W 200 W 250 W 280 W
Voltage	100-277 V

Lighting Performance

Lumens	2800 lm 8400 lm 11200 lm 14000 lm 21000 lm 28000 lm 35000 lm 39200 lm
Efficacy	140 lm/W
Color Temperature (CCT)	4000 K 5000 K
Color Rendering (CRI)	80
Beam Angle	40° 60° 90° 120°
Dimmable Lighting Control	0-10 V Dimming

Lifespan

Average Life (Hours)	50,000
Warranty (Years)	5

Environment

Operating Temperature	-40 °F ~ +140 °F
Suitable Location	DUSTY & WET
Ingress Protection (IP)	IP66
Impact Protection (IK)	IK10

Construction

Housing	Aluminum
Cover Material / Lens	PC
Base / Power Supply	Three connection cable entry points
Finish	Grey



*Specifications, Warranty, and Qualifications can vary per item/SKU. See technical data sheets (TDS) for specific information.



MONTAR

UFO High Bay

Ratings & Certificates

Rating (ATEX)

II 2 G Ex db IIC T6 Gb
II 2 D Ex tb IIIC T80 Db IP66

Rating (IECEX)

Ex db IIC T6 Gb
Ex db IIIC T80 Db IP66

Application Areas

- | Oil and gas industry
- | Chemical industry
- | Marine and aerospace field
- | Metal treatment
- | Food and alcohol industry

Electrical

Power	20 W 40 W 60 W 80 W 100 W 150 W 200 W
Voltage	100-277 V

Lighting Performance

Lumens	2800 lm 5600 lm 8400 lm 11200 lm 14000 lm 21000 lm 28000 lm
Efficacy	140 lm/W
Color Temperature (CCT)	4000 K 5000 K
Color Rendering (CRI)	80
Beam Angle	40° 60° 90° 120°
Dimmable Lighting Control	0-10 V Dimming

Lifespan

Average Life (Hours)	50,000
Warranty (Years)	5

Environment

Operating Temperature	-40 °F ~ +140 °F
Suitable Location	DUSTY & WET
Ingress Protection (IP)	IP66
Impact Protection (IK)	IK10

Construction

Housing	Aluminum
Cover Material / Lens	Toughened Glass
Base / Power Supply	Three connection cable entry points
Finish	Grey



*Specifications, Warranty, and Qualifications can vary per item/SKU. See technical data sheets (TDS) for specific information.



VOLTA

UFO High Bay

Ratings & Certificates

Rating (ATEX)

II 2 G Ex nr IIC T6 GC
II 2 D Ex tb IIIC T80 Db IP66

Rating (IECEX)

Ex nr IIC T6 GC
Ex tb IIIC T80 Db IP66

Application Areas

- | Oil and gas industry
- | Chemical industry
- | Ocean
- | Marine and aerospace field
- | Metal treatment
- | Food and alcohol industry

Electrical

Power	20 W 40 W 60 W 80 W 100 W 120 W 150 W 200 W
Voltage	100-277 V

Lighting Performance

Lumens	2800 lm 5600 lm 8400 lm 11200 lm 14000 lm 16800 lm 21000 lm 28000 lm
Efficacy	140 lm/W
Color Temperature (CCT)	4000 K 5000 K
Color Rendering (CRI)	80
Beam Angle	40° 60° 90° 120°
Dimmable Lighting Control	0-10 V Dimming

Lifespan

Average Life (Hours)	50,000
Warranty (Years)	5

Environment

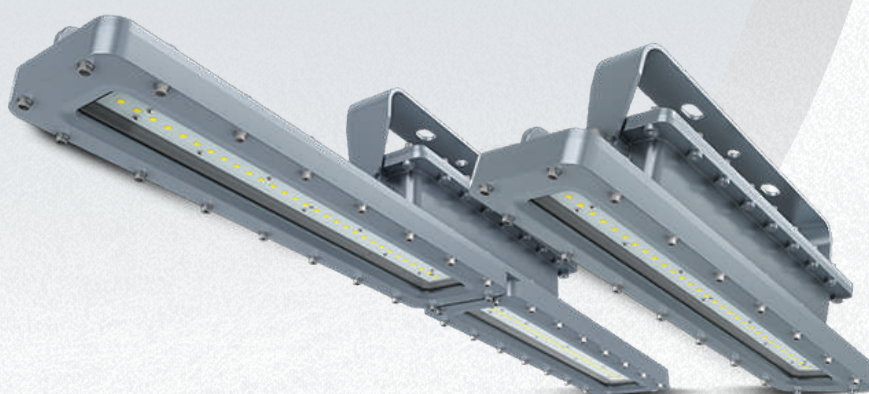
Operating Temperature	-40 °F ~ +140 °F
Suitable Location	DUSTY & WET
Ingress Protection (IP)	IP66
Impact Protection (IK)	IK08

Construction

Housing	Aluminum
Cover Material / Lens	Toughened Glass
Base / Power Supply	Three connection cable entry points
Finish	Grey



*Specifications, Warranty, and Qualifications can vary per item/SKU. See technical data sheets (TDS) for specific information.



ERGO

Linear High Bay

Ratings & Certificates

Rating (UL844)

Class I, Div. 1, Groups C, D
 Class I, Div. 2, Groups A, B, C, D
 Class II, Div. 1, Groups E, F, G
 Class II, Div. 2, Groups F, G
 Class III

Marine Rating

UL 1598A ABS

Rating (ATEX)

II2 G Ex db op is IIB T5/T6 Gb
 II2 D Ex op is tb IIIC T80/90C Db IP66

Rating (IECEX)

Ex db op is IIB T5/T6 Gb
 Ex op is tb IIIC T80/90C Db IP66

Electrical

Power	20 W 40 W 60 W 80 W 100 W 120 W
Voltage	100-277 V

Lighting Performance

Lumens	2800 lm 5600 lm 8400 lm 11200 lm 14000 lm 16800 lm
Efficacy	140 lm/W
Color Temperature (CCT)	4000 K 5000 K
Color Rendering (CRI)	82
Beam Angle	40° 60° 90° 120°
Dimmable Lighting Control	0-10 V Dimming

Lifespan

Average Life (Hours)	50,000
Warranty (Years)	5

Application Areas

- | Oil and gas industry
- | Chemical industry
- | Marine and aerospace field
- | Metal treatment
- | Food and alcohol industry

Environment

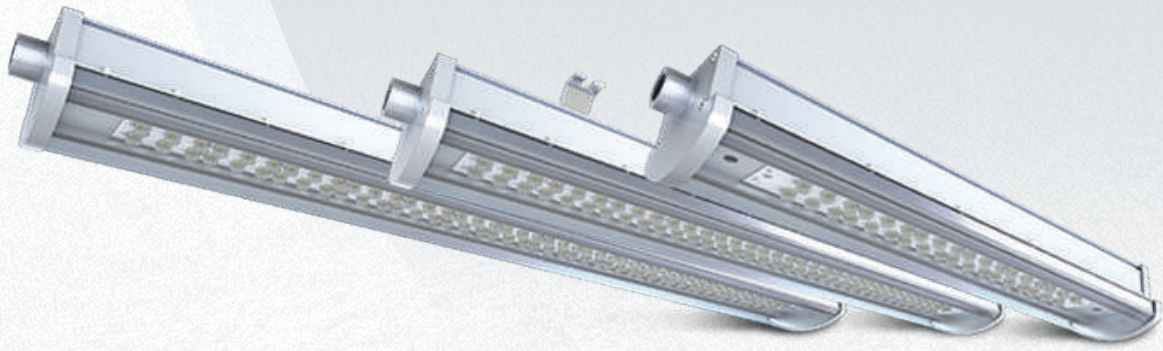
Operating Temperature	-40 °F ~ +140 °F
Suitable Location	DUSTY & WET
Ingress Protection (IP)	IP66
Impact Protection (IK)	IK10

Construction

Housing	Aluminum
Cover Material / Lens	Toughened Glass
Base / Power Supply	Three connection cable entry points
Finish	Grey



*Specifications, Warranty, and Qualifications can vary per item/SKU. See technical data sheets (TDS) for specific information.



ZALE

Linear Light

Ratings & Certificates

Rating (UL844)

Class 1, Division 2, Groups A, B, C, & D

Application Areas

- | Oil and gas industry
- | Chemical industry
- | Marine and aerospace field
- | Metal treatment
- | Food and alcohol industry

Electrical

Power	10 W 20 W 30 W 40 W 50 W 60 W 70 W 80 W
Voltage	100-277 V

Lighting Performance

Lumens	1300 lm 2600 lm 3900 lm 5200 lm 6500 lm 7800 lm 9100 lm 10400 lm
Efficacy	130 lm/W
Color Temperature (CCT)	4000 K 5000 K
Color Rendering (CRI)	80
Beam Angle	40° 60° 90° 120°
Dimmable Lighting Control	0-10 V Dimming

Lifespan

Average Life (Hours)	50,000
Warranty (Years)	5

Environment

Operating Temperature	-40 °F ~ +140 °F
Suitable Location	DUSTY & WET
Ingress Protection Rating (IP)	IP66
Impact Protection (IK)	IK09

Construction

Housing	ADC12 Aluminum
Cover Material / Lens	Toughened Glass
Base / Power Supply	Three connection cable entry points
Finish	Grey



*Specifications, Warranty, and Qualifications can vary per item/SKU. See technical data sheets (TDS) for specific information.



BERNARD

Linear Light

Ratings & Certificates

Rating (ATEX)

II2 G Ex op is eb mb IIC T5/T6 Gb
 II2 D Ex op is tb IIIC T95/80 °C Db

Application Areas

- | Oil and gas industry
- | Chemical industry
- | Marine and aerospace field
- | Metal treatment
- | Food and alcohol industry

Electrical

Power	10 W 20 W 30 W 40 W 50 W 60 W 70 W 80 W
Voltage	100-277 V

Lighting Performance

Lumens	1300 lm 2600 lm 3900 lm 5200 lm 6500 lm 7800 lm 9100 lm 10400 lm
Efficacy	130 lm/W
Color Temperature (CCT)	4000 K 5000 K
Color Rendering (CRI)	80
Beam Angle	40° 60° 90° 120°
Dimmable Lighting Control	0-10V Dimming

Lifespan

Average Life (Hours)	50,000
Warranty (Years)	5

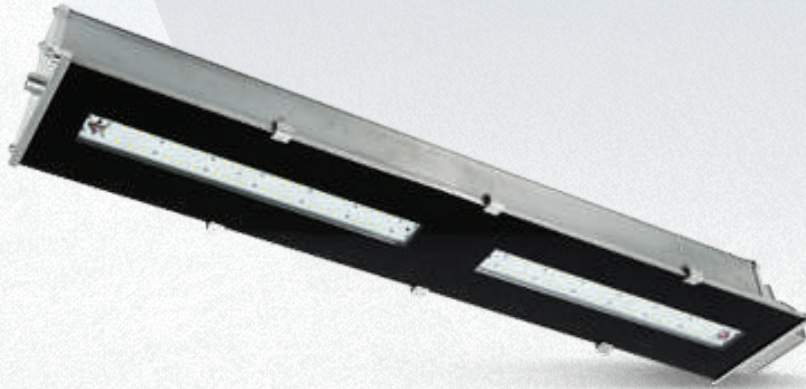
Environment

Operating Temperature	-40 °F ~ +140 °F
Suitable Location	DUSTY & WET
Ingress Protection Rating (IP)	IP66/ IP67
Impact Protection (IK)	IK10

Construction

Housing	Die-cast Aluminum
Cover Material / Lens	Fireproof transparent PC
Finish	Silver

*Specifications, Warranty, and Qualifications can vary per item/SKU. See technical data sheets (TDS) for specific information.



ANGUS

Linear Light

Ratings & Certificates

Rating (ATEX)

II2 G Ex op is eb mb IIC T5/T6 Gb
II2 D Ex op is tb IIIC T95/80 °C Db

Application Areas

- | Oil and gas industry
- | Chemical industry
- | Marine and aerospace field
- | Metal treatment
- | Food and alcohol industry

Electrical

Power	10 W 20 W 30 W 40 W 50 W 60 W 70 W 80 W
Voltage	100-277 V

Lighting Performance

Lumens	1300 lm 2600 lm 3900 lm 5200 lm 6500 lm 7800 lm 9100 lm 10400 lm
Efficacy	130 lm/W
Color Temperature (CCT)	4000 K 5000 K
Color Rendering (CRI)	80
Beam Angle	40° 60° 90° 120°
Dimmable Lighting Control	0-10 V Dimming

Lifespan

Average Life (Hours)	50,000
Warranty (Years)	5

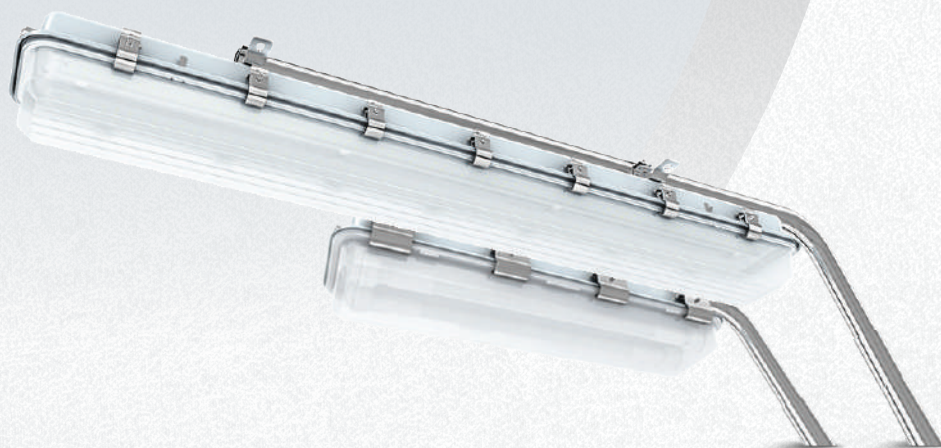
Environment

Operating Temperature	-40 °F ~ +140 °F
Suitable Location	DUSTY & WET
Ingress Protection (IP)	IP66 / IP67
Impact Protection (IK)	IK10

Construction

Housing	Die-Cast Aluminum
Cover Material / Lens	Toughened Glass
Finish	Grey

*Specifications, Warranty, and Qualifications can vary per item/SKU. See technical data sheets (TDS) for specific information.



CONALL

Linear Area Light

Ratings & Certificates

Rating (UL844)

Class I, Division 2, Groups A, B, C, D
Class II, Division 1, Groups E, F, G
Class II, Division 2, Groups F, G
Class III

Rating (ATEX)

II 2GD Ex db eb mb IIC T5/T6 Gb
Ex tb is IIIC T95/T80 Db IP66

Marine Rating

UL 1598, UL 844

Rating (IECEX)

Ex db eb mb IIC T5/T6 Gb
Ex tb IIIC T95/T80 Db

Electrical

Power	20 W 30 W 40 W 60 W 80 W
Voltage	100-277 V

Lighting Performance

Lumens	2800 lm 4200 lm 5600 lm 8400 lm 11200 lm
Efficacy	140 lm/W
Color Temperature (CCT)	4000 K 5000 K
Color Rendering (CRI)	80
Beam Angle	40° 60° 90° 120°
Dimmable Lighting Control	0-10 V Dimming

Lifespan

Average Life (Hours)	50,000
Warranty (Years)	5

Application Areas

- | Oil and gas industry
- | Chemical industry
- | Marine and aerospace field
- | Metal treatment
- | Food and alcohol industry

Environment

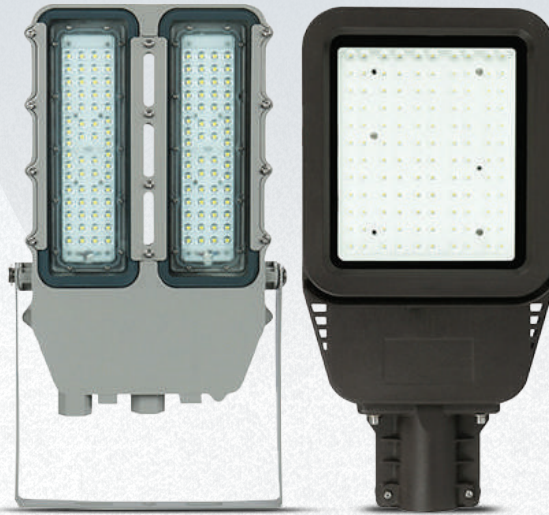
Operating Temperature	-40 °F ~ +140 °F
Suitable Location	DUSTY & WET
Ingress Protection (IP)	IP66
Impact Protection (IK)	IK09

Construction

Housing	Stainless Steel
Cover Material / Lens	PC
Base / Power Supply	Three connection cable entry points
Finish	Gray



*Specifications, Warranty, and Qualifications can vary per item/SKU. See technical data sheets (TDS) for specific information.



NERON

Area Light

Ratings & Certificates

Rating (ATEX)

II 2 G Ex nr IIC T6 GC
II 2 D Ex tb IIIC T80 Db IP66

Rating (IECEX)

Ex nr IIC T6 GC
Ex tb IIIC T80 Db IP66

Application Areas

- | Oil and gas industry
- | Chemical industry
- | Marine and aerospace field
- | Metal treatment
- | Food and alcohol industry

Electrical

Power	20 W 40 W 60 W 80 W 100 W 120 W 150 W 200 W
Voltage	100-277 V

Lighting Performance

Lumens	2800 lm 5600 lm 8400 lm 11200 lm 14000 lm 16800 lm 21000 lm 28000 lm
Efficacy	140 lm/W
Color Temperature (CCT)	4000 K 5000 K
Color Rendering (CRI)	80
Beam Angle	40° 60° 90° 120°
Dimmable Lighting Control	0-10 V Dimming

Lifespan

Average Life (Hours)	50,000
Warranty (Years)	5

Environment

Operating Temperature	-40 °F ~ +140 °F
Suitable Location	DUSTY & WET
Ingress Protection (IP)	IP66
Impact Protection (IK)	IK09

Construction

Housing	Aluminum
Cover Material / Lens	Tempered Glass
Base / Power Supply	Three connection cable entry points
Finish	Grey



*Specifications, Warranty, and Qualifications can vary per item/SKU. See technical data sheets (TDS) for specific information.



LANTORCH

Drop Light

Ratings & Certificates

Rating (UL844)

Class I, Division 1 Groups B, C, D
Class II, Division 1 Groups F, G
Class II, Division 2 Groups F, G
Class III

Rating (ATEX)

II 2 G Ex db op is IIC T4/T5 Gb
II 2 D Ex op is tb IIIC T135° CT Db
Ex op is tb IIIC T135° CT Db

Rating (IECEX)

Ex db op is IIC T4/T5 GB

Application Areas

- | Oil and gas industry
- | Chemical industry
- | Ocean
- | Marine and aerospace field
- | Metal treatment
- | Food and alcohol industry
- | Other high humidity, high dust, high temperature & vapor locations

Electrical

Power	5 W 7 W 9 W 10 W 15 W 20 W 30 W
Voltage	100-277 V

Lighting Performance

Lumens	650 lm 910 lm 1170 lm 1300 lm 1950 lm 2600 lm 3900 lm
Efficacy	130 lm/W
Color Temperature (CCT)	4000 K 5000 K
Color Rendering (CRI)	80

Lifespan

Average Life (Hours)	50,000
Warranty (Years)	5

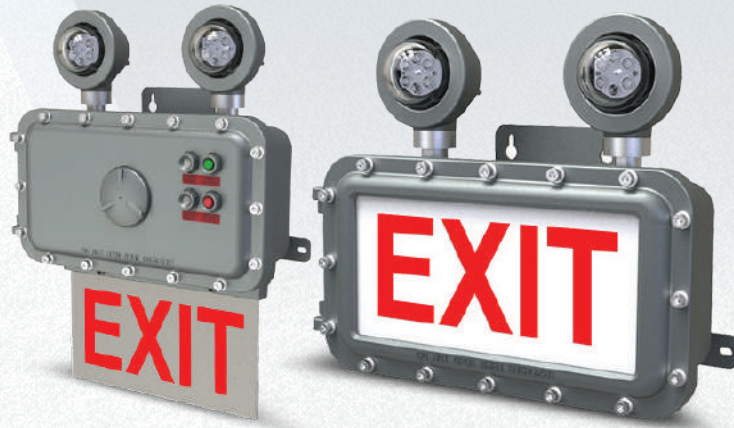
Environment

Operating Temperature	-40 °F ~ +140 °F
Suitable Location	DUSTY & WET
Ingress Protection Rating (IP)	IP67
Impact Protection (IK)	IK10

Construction

Housing	Copper Free Aluminum
Cover Material / Lens	Glass
Base / Power Supply	Direct Wire
Finish	Metallic Gray

*Specifications, Warranty, and Qualifications can vary per item/SKU. See technical data sheets / TDS for specific information.



AXEL

Exit Light

Ratings & Certificates

Rating (UL844)

Class I, Division 1, Groups C, D
 Class I, Division 2, Groups A, B, C, D
 Class II, Division 1, Groups E, F, G
 Class II, Division 2, Groups F, G
 Class III

Marine Rating

UL1203 and UL50

Rating (ATEX)

II2 G Ex db op is IIB T5/T6 Gb
 II2 D Ex op is tb IIIC T80/90C Db IP66

Rating (IECEX)

Ex db op is IIB T5/T6 Gb
 Ex op is tb IIIC T80/90C Db IP66

Application Areas

- Oil and gas industry
- Chemical industry
- Metal treatment
- Food and alcohol industry
- Other high humidity, high dust, high temperature, vapor locations.

Electrical

Power	6 W
Voltage	100-277 V

Lighting Performance

Color	Red
-------	-----

Lifespan

Average Life (Hours)	50,000
Warranty (Years)	5

Environment

Operating Temperature	-40 °F ~ +140 °F
Suitable Location	DUSTY & WET
Ingress Protection Rating (IP)	IP66

Construction

Housing	Die-casting Aluminum
Indicator	Tempered Glass
Bolts & Mounting Sling	Stainless Steel
Sign Panel	Resistant Acrylic

*Specifications, Warranty, and Qualifications can vary per item/SKU. See technical data sheets (TDS) for specific information.



EXO

Exit Light

Ratings & Certificates

Rating (UL844)

Class I, Division 2, Groups A, B, C, D
 Class II, Division 1, Groups E, F, G
 Class II, Division 2, Groups E, F, G
 Class III

Marine Rating

UL1598 and UL1598A

Electrical

Power	5 W
Voltage	100-277 V

Lighting Performance

Color	Red
-------	-----

Lifespan

Average Life (Hours)	50,000
Warranty (Years)	5

Environment

Operating Temperature	-40 °F ~ +140 °F
Suitable Location	DUSTY & WET
Ingress Protection Rating (IP)	IP66

Application Areas

- | All petroleum production and refinery
- | Petroleum loading and transportation
- | Military space conditions
- | Ocean vessel operations
- | Other high humidity, high dust, high temperature, vapor locations.

Construction

Housing	Die-casting Aluminum
Indicator	Tempered Glass
Bolts & Mounting Sling	Stainless Steel
Sign Panel	Resistant Acrylic



*Specifications, Warranty, and Qualifications can vary per item/SKU. See technical data sheets (TDS) for specific information.

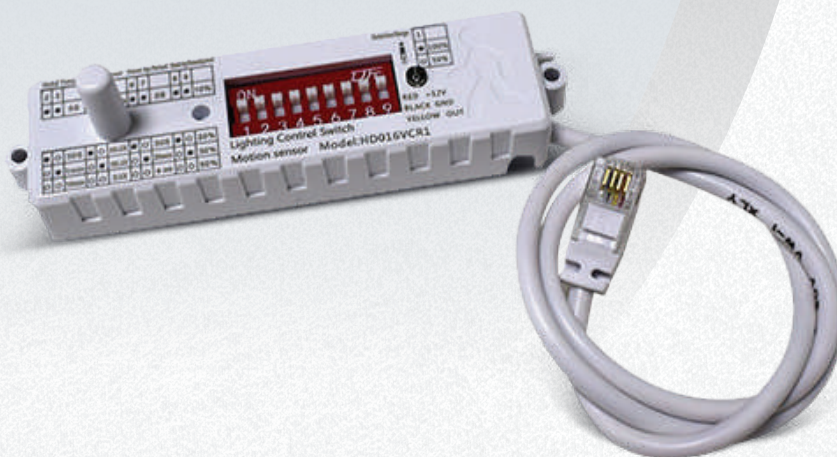
| Sensors

Dimmable Motion Detecting Sensor

DIP Switch Dimmable Motion Sensor

Daylight Harvesting Sensor

UV Lights Sensor



Microwave Motion Sensor

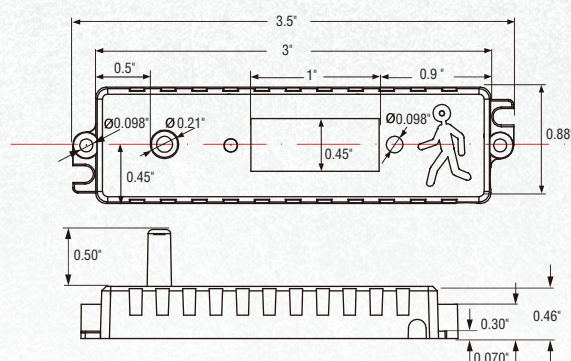
Technical Parameters

Operating Voltage	12 V DC
Operating Current	≥25 A Max
Output	1-10 V
Stand-by Power	<0.5 W
Detection Area	50%/100%
Daylight Threshold	2 Lux/10 Lux/50 Lux/Disable
Hold Time	5s/30s/1min/10 min
Microwave Frequency	5.8 GHz ± 75 MHz
Mounting Height	Max. 4 m/13.12 ft
Detection Range	Max. ø10 m/32.8 ft
Stand-by Dimming	10%/20%/30%/50%
Stand-by Period	0/30s/20 min/+∞
Microwave Power	<0.3m W
IP Rating	IP20

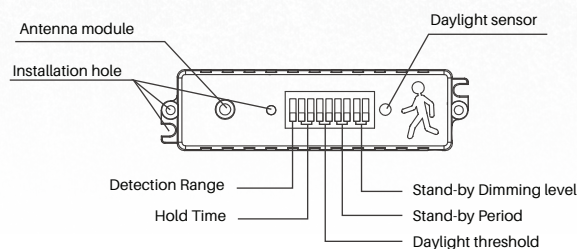
Compatible Products



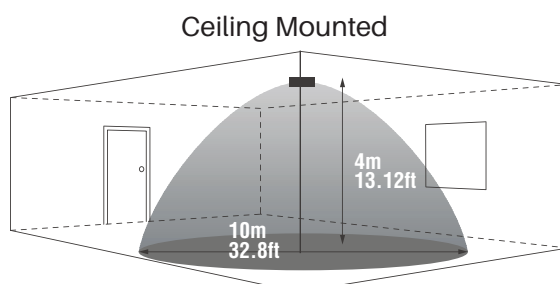
Dimensions



Mechanical Structure



Detection Patterns





Bilevel Dimming Sensor

Technical Parameters

Operating Voltage	120-277 V AC 50/60 Hz
Switching Capacity	Max. 3.0 A@120 V AC; Max. 2.0 A@277 V AC
Stand-by Power	≥ 1 W
Operating Temperature	-4 °F~140 °F
Detection Area	25%/50%/75%/100%
Hold Time	5s/30s/1 min/3 min/5 min /10 min/20 min/30 min Along With Remote HD01R
Daylight Threshold	2 Lux/10 Lux/30 Lux/50 Lux/80 Lux/120 Lux/ Disable Along With Remote HD01R
Mounting Height	Max. 6m / 19.68 ft
Detection Range	Max. ø14 m / 45.92 ft
Microwave Frequency	5.8 GHz ± 75 MHz
IP Rating	IP20
Remote Model	IHD01R/HD03R/HD05R

Compatible Products

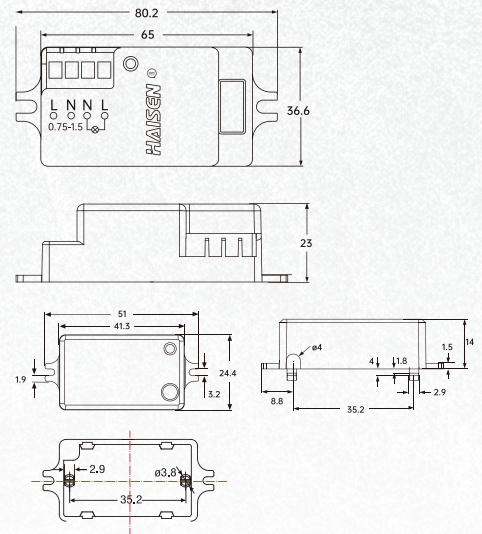


Panel Lights

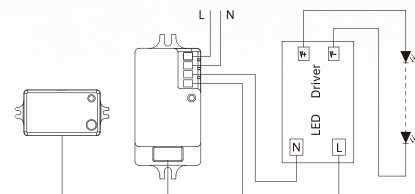


Troffers

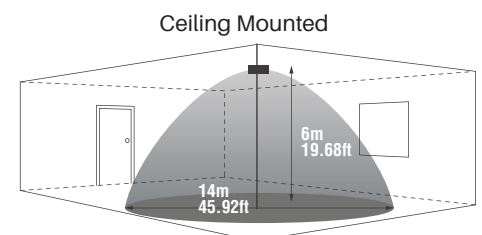
Dimensions

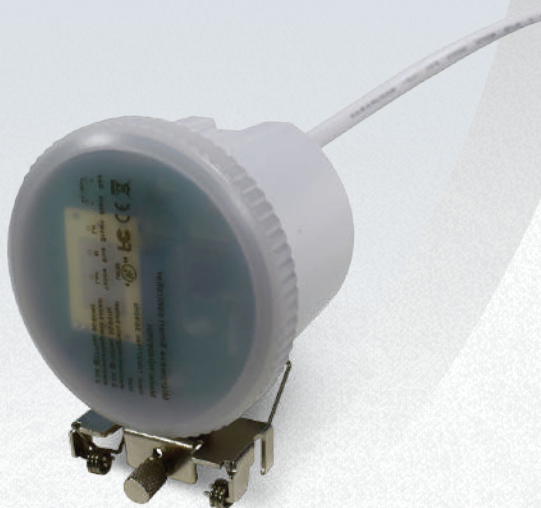


Wiring Diagram



Detection Patterns





Trilevel Dimming

Technical Parameters

Operating Voltage	120-120-277 V AC, 50 Hz/60Hz
Operating Temperature	-31 °F ~ 158 °F
Switching Capacity	800 W@120-220 V AC, 1000 W@220-277 V AC (Incandescent lamp); 400 W@120 V AC, 800 W@220-277 V AC (Control gear)
Stand-by Power	≤1 W
Detection Area	25%/50%/75%/100%
Hold Time	5s / 30s / 1min / 5 min / 10 min / 20 min / 30 min
Daylight Threshold	2 Lux/10 Lux/30 Lux/ 50 Lux/80 Lux/120 Lux/Disable
Stand-by Period	5.8 GHz±75 MHz 0 s/10s/30s/1min/ 5 min/10 min/30 min/+ ∞
Stand-by Dimming Level	10%/20%/30%/50%
Microwave Frequency	Max. 15 m/49.21 ft 5.8 GHz±75 MHz
Microwave Power	<1 mW
Mounting Height	Max. 15 m/49.21 ft
Detection Range	Max. (DxH): 16 m/52.49 ft x 15 m/49.21 ft
IP Rating	IP65
Detection Angle	150° (Wall Installation), 360° (Ceiling Installation)
Safety Standard	EN61347-1 EN61347-2-13 EN60598-1
Size	ø3.14" x 2.43"
Certificate	cULus Listed, FCC

Compatible Products



Linear Low Bays

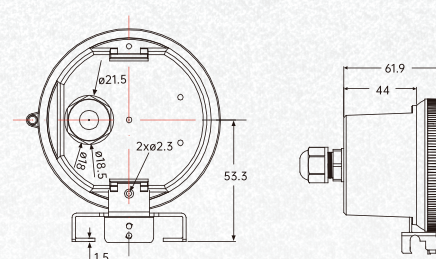


High Bays

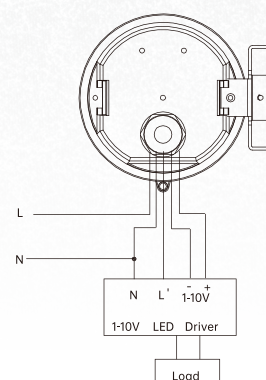


Hazardous Lighting

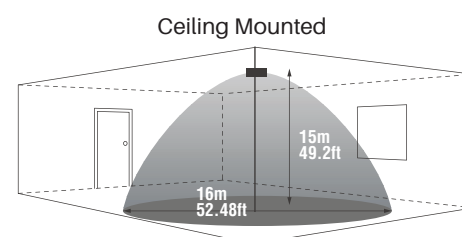
Dimensions



Wiring Diagram



Detection Patterns





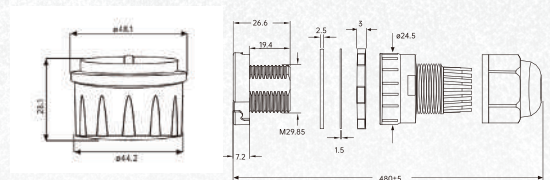
Daylight Harvesting Sensor

Technical Parameters

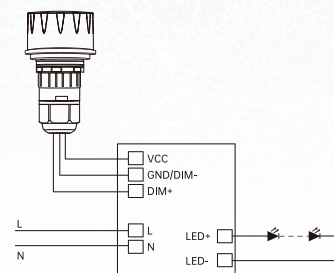
Operating Voltage	10.5-15 V DC Supply Current > 30 mA
Stand-by Power	< 30 mA Power Consumption
Output	DIM 1-10 V
Daylight Priority Function	Daylight threshold: 120 Lux/ 80 Lux/50 Lux/30 Lux Stand-by period: + Stand-by dimming level: 10%/20%/30%
Daylight Threshold	2 Lux/10 Lux/30 Lux/50 Lux/ 80 Lux/120 Lux/Disable
Detection Area	25%/50%/75%/100%
Hold Time	5s/30s/1 min/3 min/5 min/10 min/ 20 min / 30 min
Microwave Frequency	5.8 GHz ± 75 MHz
Mounting Height	Max. 12 m/39.36 ft Ceiling Mounted
Detection Range	Max. ø 16 m/52.48 ft Ceiling Mounted
Stand-by Dimming Level	10%/20%/30%/50%
Stand-by Period	0s/10s/30s/1 min/5 min/10 min/ 30 min/1 h/+ ∞
Remote Model	HD05R
Motion Detection	0.5-1 m/s
IP Rating	IP65
Operating Temperature	-4 °F ~ 140 °F
Average Life (Hours)	50,000
Warranty	5

Dimensions

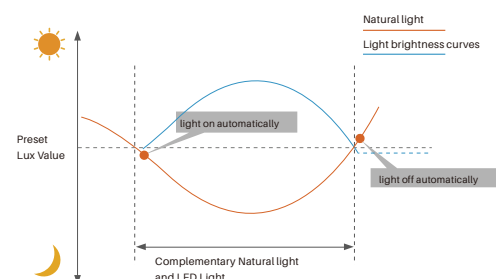
Diameter (Front)	Ø44.2
Diameter (Back)	Ø48.1
Height	28.1



Wiring Diagram



Daylight Harvesting (Dimming) Function



Compatible Products



Wallpacks



Area Luminaires

LIGHTING CATALOG



Scan To Explore Our
Exciting Product Range



(1) 844-533-4546 | info@ikioledlighting.com
8470 Allison Pointe Blvd, Suite 128 Indianapolis, IN 46250
www.ikioledlighting.com